



December 22, 2006

Alberta Energy and Utilities Board  
5<sup>th</sup> Floor, 640 - 5<sup>th</sup> Avenue S.W.  
Calgary, Alberta  
T2P 3G4

**RE: ATCO Electric Ltd. 2007 Interim Distribution Tariff Price Schedules**

For your information a revised copy of the ATCO Electric's 2007 Interim Distribution Tariff Price Schedules effective January 1, 2007, have been uploaded to the Board's Electronic Application System. The Price Schedules themselves have not been changed. The only revision is the addition of EUB Order U2006-335 in the footer.

Sincerely,

***Original Signed by Bonnie Yee***

Bonnie Yee  
Regulatory Assistant, Electric Pricing

Attachments

/by



## PRICE SCHEDULE INDEX

### RESIDENTIAL SERVICE

Standard Residential Service Price Schedule D11

### SMALL GENERAL SERVICE

Standard Small General Service Price Schedule D21

Small General Service - Energy Only Price Schedule D22

Small General Service - Isolated Industrial Areas - Distribution Connected Price Schedule D24

Irrigation Pumping Service Price Schedule D25

REA Irrigation Pumping Service Price Schedule D26

### LARGE GENERAL SERVICE/INDUSTRIAL

Large General Service/Industrial - Distribution Connected Price Schedule D31

Large General Service/Industrial - Transmission Connected Price Schedule T31

Generator Interconnection and Standby Power - Distribution Connected Price Schedule D32

Transmission Opportunity Rate - Distribution Connected Price Schedule D33

Transmission Opportunity Rate - Transmission Connected Price Schedule T33

Large General Service/Industrial - Isolated Industrial Areas - Distribution Connected Price Schedule D34

### OILFIELD

Small Oilfield and Pumping Power Price Schedule D41

Small Oilfield and Pumping Power - Isolated Industrial Areas - Distribution Connected Price Schedule D44

### FARM SERVICE

REA Farm Service Price Schedule D51

REA Farm Service - Excluding Wires Service Provider Functions Price Schedule D52

Farm Service Price Schedule D56

### LIGHTING SERVICE

Street Lighting Service Price Schedule D61

Private Lighting Service Price Schedule D63

### PRICE OPTIONS

Idle Service Option F

Service for Non-Standard Transformation and Metering Configurations Option H

REA Distribution Price Credit Option P

### PRICING ADJUSTMENTS (RIDERS)

Municipal Assessment Rider A-1

Balancing Pool Adjustment Rider B

Special Facilities Charge Rider E

Temporary Adjustment Rider G

Interim Adjustment Rider J

Interim RRT Adjustment Rider Q

---

**Availability**

- For System Access Service and Distribution Access Service for all Points of Service throughout the territory served by the Company.
- For single-phase service at secondary voltage through a single meter.
- For normal use by a single and separate household.
- Not applicable to any commercial or industrial use.

**Price**

The charge for service in any one billing month is the sum of the Customer Charge and Energy Charge, determined for each individual Point of Service.

---

	<b>Customer Charge</b>	<b>Energy Charge</b>
<b>Transmission</b>	-	1.62 ¢ / kW.h
<b>Distribution</b>	36.97 ¢ / day	3.76 ¢ / kW.h
<b>Service</b>	32.00 ¢ / day	-
<b>TOTAL PRICE</b>	<b>68.97 ¢ / day</b>	<b>5.38 ¢ / kW.h</b>

---

The minimum monthly charge is the Customer Charge.

**Application**

1. **Price Option** - the following price option may apply:  
Idle Service (Option F)
2. **Price Adjustments** - the following price adjustments (riders) may apply:  
Municipal Assessment (Rider A-1)  
Balancing Pool Adjustment (Rider B)  
Temporary Adjustment (Rider G)  
Interim Adjustment (Rider J)  
Interim RRT Adjustment (Rider Q)

**Availability**

For System Access Service and Distribution Access Service for all Points of Service throughout the territory served by the Company, with single or three-phase electric service at secondary voltage. Not applicable for any service in excess of 500 kW.

**Price**

Charges for service in any one billing month shall be the sum of the Customer Charge, Demand Charge, and Energy Charge, determined for each individual Point of Service.

	<b>Customer Charge</b>	<b>Demand Charge</b>	<b>Energy Charge</b>	
			For the first 200 kW.h per kW of billing demand	For energy in excess of 200 kW.h per kW of billing demand
<b>Transmission</b>	-	7.16 ¢/kW/day	0.47 ¢ / kW.h	0.47 ¢ / kW.h
<b>Distribution</b>	-	13.39 ¢/kW/day	2.25 ¢ / kW.h	-
<b>Service</b>	46.47 ¢ / day	-	-	-
<b>TOTAL PRICE</b>	<b>46.47 ¢ / day</b>	<b>20.55 ¢/kW/day</b>	<b>2.72 ¢ / kW.h</b>	<b>0.47 ¢ / kW.h</b>

The billing demand may be estimated or measured and will be the greater of the following:

- (a) the highest metered demand during the billing period;
- (b) 85% of the difference between the highest metered demand in the twelve month period including and ending with the billing period and 150 kW, if this is greater than zero;
- (c) the estimated demand;
- (d) the contract demand;
- (e) 5 kilowatts.

The minimum monthly bill is the sum of the Service Charge and the total Demand Charge.

**Application**

1. **Power Factor Correction** - where a Customer's power factor is found to be less than 90%, the Company may require the Customer to install corrective equipment.
2. **Price Options** - the following price options may apply:  
 Idle Service (Option F)  
 Service for Non-Standard Transformation and Metering Configurations (Option H)  
 REA Distribution Price Credit (Option P)
3. **Price Adjustments** - the following price adjustments (riders) may apply:  
 Municipal Assessment (Rider A-1)  
 Balancing Pool Adjustment (Rider B)  
 Temporary Adjustment (Rider G)  
 Interim Adjustment (Rider J)  
 Interim RRT Adjustment (Rider Q)

**Availability**

For System Access Service and Distribution Access Service for all Points of Service throughout the territory served by the Company, with single or three-phase electric service at secondary voltage. Not applicable for any service in excess of 50 kW.

**Price**

Charges for service in any one billing month shall be the Energy Charge, determined for each individual Point of Service.

	<b>Energy Charge</b>	
	For the first 50 kW.h per kW of billing demand	For energy in excess of 50 kW.h per kW of billing demand
<b>Transmission</b>	0.50 ¢ / kW.h	0.50 ¢ / kW.h
<b>Distribution</b>	14.71 ¢ / kW.h	6.20 ¢ / kW.h
<b>Service</b>	-	-
<b>TOTAL PRICE</b>	<b>15.21 ¢ / kW.h</b>	<b>6.70 ¢ / kW.h</b>

The billing demand may be estimated or measured and will be the greater of the following:

- (a) the highest metered demand during the billing period;
- (b) the estimated demand;
- (c) the contract demand;
- (d) 5 kilowatts.

The minimum annual charge is 12 times the sum of:

- (a) the Service Charge from Price Schedule D21; and
- (b) the Total Demand Charge from Price Schedule D21 multiplied by the higher of the DCD or 5 kW.

**Application**

1. **Power Factor Correction** - where the power factor at a Point of Service is found to be less than 90%, the Company may require the installation of corrective equipment.
2. **Price Options** - the following price option may apply:  
Idle Service (Option F)  
Service for Non-Standard Transformation and Metering Configurations (Option H)
3. **Price Adjustments** - the following additional charges (riders) may apply:  
Municipal Assessment (Rider A-1)  
Balancing Pool Adjustment (Rider B)  
Temporary Adjustment (Rider G)  
Interim Adjustment (Rider J)  
Interim RRT Adjustment (Rider Q)

**Availability**

For Distribution Access Service, single or three-phase, for all Points of Service throughout the territory served by the Company distribution connected from an isolated industrial areas. Not applicable for any service in excess of 500 kW.

**Price**

Charges for service in any one billing month shall be the sum of the Customer Charge, Demand Charge, and Energy Charge, determined for each individual Point of Service.

	Customer Charge	Demand Charge	Energy Charge	
			For the first 200 kW.h per kW of billing demand	For energy in excess of 200 kW.h per kW of billing demand
<b>Distribution</b>	-	13.39 ¢/kW/day	2.25 ¢ / kW.h	-
<b>Service</b>	46.47 ¢ / day	-	-	-
<b>TOTAL PRICE</b>	<b>46.47 ¢ / day</b>	<b>13.39 ¢/kW/day</b>	<b>2.25 ¢ / kW.h</b>	-

The billing demand may be estimated or measured and will be the greater of the following:

- (a) the highest metered demand during the billing period;
- (b) 85% of the difference between the highest metered demand in the twelve month period including and ending with the billing period and 150 kW, if this is greater than zero;
- (c) the estimated demand;
- (d) the contract demand;
- (e) 5 kilowatts.

The minimum monthly bill is the sum of the Service Charge and the total Demand Charge.

**Application**

1. **Power Factor Correction** - where a Customer's power factor is found to be less than 90%, the Company may require the Customer to install corrective equipment.
2. **Price Options** - the following price options may apply:  
 Idle Service (Option F)  
 Service for Non-Standard Transformation and Metering Configurations (Option H)  
 REA Distribution Price Credit (Option P)
3. **Price Adjustments** - the following price adjustments (riders) may apply:  
 Municipal Assessment (Rider A-1)  
 Temporary Adjustment (Rider G)  
 Interim Adjustment (Rider J)

**Availability**

For System Access Service and Distribution Access Service for all Points of Service throughout the territory served by the Company, between April 1 and October 31 for seasonal irrigation pumping loads. Not applicable for any service in excess of 150 kW.

**Price**

Charges for service in any one billing month during one Season shall be the sum of the Customer Charge, Demand Charge, and Energy Charge, determined for each individual Point of Service.

	<b>Customer Charge</b>	<b>Demand Charge</b>	<b>Energy Charge</b>
<b>Transmission</b>	-	3.53 ¢/kW/day	0.51 ¢ / kW.h
<b>Distribution</b>	-	8.53 ¢/kW/day	-
<b>Service</b>	11.51 ¢ / day	-	-
<b>TOTAL PRICE</b>	<b>11.51 ¢ / day</b>	<b>12.06 ¢/kW/day</b>	<b>0.51 ¢ / kW.h</b>

The billing demand may be estimated or measured and will be the greater of the following:

- (a) the highest metered demand during the billing period;
- (b) the estimated demand;
- (c) the contract demand;
- (d) 5 kilowatts.

For non-demand metered services, demand shall be estimated based on equipment nameplate ratings as **kW Billing Demand = kW Nameplate Rating**, or **kW Billing Demand = HP Nameplate x 0.746**.

**Application**

1. **Billing** - the minimum charge for the month during the season shall be the Service Charge and the Demand Charge. Previously, charges for service for one Season was the sum of the Service Charge, Demand Charge, and Energy Charge, determined for each individual Point of Service, where one Season is defined as the period from April 1 to October 31. Due to monthly billing, rates for the Customer Charge and Demand Charge are one-seventh the season charge.
2. **Idle Service** - in the event the service remains idle for two consecutive seasons, the Company may remove its facilities, unless the Customer pays the minimum charge for the upcoming season prior to December 31, of the preceding year.
3. **Power Factor Correction** - where a Customer's power factor is found to be less than 90%, the Company may require the Customer to install corrective equipment.
4. **Price Adjustments** - the following price adjustments (riders) may apply:  
 Balancing Pool Adjustment (Rider B)  
 Temporary Adjustment (Rider G)  
 Interim Adjustment (Rider J)  
 Interim RRT Adjustment (Rider Q)

**Availability**

For System Access Service and Distribution Access Service for all Points of Service throughout the territory served by the Company, between April 1 and October 31 for seasonal irrigation pumping loads of Rural Electrification Association Customers and individual co-operative and colony farms with their own distribution systems. Not applicable for any service in excess of 150 kW.

**Price**

Charges for service in any one billing month during one Season shall be the sum of the Customer Charge, Demand Charge, and Energy Charge, determined for each individual Point of Service.

**Customers in the REA O & M Pool**

	<b>Customer Charge</b>	<b>Demand Charge</b>	<b>Energy Charge</b>
<b>Transmission</b>	-	3.53 ¢/kW/day	0.51 ¢ / kW.h
<b>Distribution</b>	-	2.68 ¢/kW/day	-
<b>Service</b>	11.51 ¢ / day	-	-
<b>TOTAL PRICE</b>	<b>11.51 ¢ / day</b>	<b>6.21 ¢/kW/day</b>	<b>0.51 ¢ / kW.h</b>

**Customers outside of the REA O & M Pool**

	<b>Customer Charge</b>	<b>Demand Charge</b>	<b>Energy Charge</b>
<b>Transmission</b>	-	3.53 ¢/kW/day	0.51 ¢ / kW.h
<b>Distribution</b>	-	-	-
<b>Service</b>	11.51 ¢ / day	-	-
<b>TOTAL PRICE</b>	<b>11.51 ¢ / day</b>	<b>3.53 ¢/kW/day</b>	<b>0.51 ¢ / kW.h</b>

The billing demand may be estimated or measured and will be the greater of the following:

- (a) the highest metered demand during the billing period;
- (b) the estimated demand;
- (c) the contract demand;
- (d) 5 kilowatts.

For non-demand metered services, demand shall be estimated based on equipment nameplate ratings as **kW Billing Demand = kW Nameplate Rating**, or **kW Billing Demand = HP Nameplate x 0.746**.

**REA Specific Charges:**

Other charges are applied on behalf of the REAs as defined in contracts and are subject to change from time to time.

These charges include operation and maintenance charges and deposit reserve charges, and are in addition to the charges contained in this price schedule.

The minimum charge for the season shall be 7 times the Service Charge and 7 times the Demand Charge.

**Application**

1. **Billing** - the minimum charge for the month during the season shall be the Service Charge and the Demand Charge. Previously, charges for service for one Season was the sum of the Service Charge, Demand Charge, and Energy Charge, determined for each individual Point of Service, where one Season is defined as the period from April 1 to October 31. Due to monthly billing, rates for the Customer Charge and Demand Charge are one-seventh the season charge.
2. **Idle Service** - in the event the service remains idle for two consecutive seasons, the Company may remove its facilities, unless the Customer pays the minimum charge for the upcoming season prior to December 31, of the preceding year.
3. **Power Factor Correction** - where a Customer's power factor is found to be less than 90%, the Company may require the Customer to install corrective equipment.
4. **Price Adjustments** - the following price adjustments (riders) may apply:
  - Balancing Pool Adjustment (Rider B)
  - Temporary Adjustment (Rider G)
  - Interim Adjustment (Rider J)
  - Interim RRT Adjustment (Rider Q)

**Availability**

- For System Access Service and Distribution Access Service, single or three-phase distribution connected, for all Points of Service throughout the territory served by the Company from the Alberta Interconnected System.
- For distribution connected loads greater than 500 kW, the Point of Service must be equipped with interval data metering.

**Price**

Charges for service in any one billing month shall be the sum of the Customer Charge, Demand Charge, Energy Charge and Charge for Deficient Power Factor, determined for each individual Point of Service:

	<b>Customer Charge</b>	<b>Demand Charge</b>		<b>Energy Charge</b>
		For the first 500 kW of billing demand	For all billing demand over 500 kW	
<b>Transmission</b>	-	9.55 ¢/kW/day	11.07 ¢/kW/day	0.47 ¢ / kW.h
<b>Distribution</b>	-	15.72 ¢/kW/day	7.86 ¢/kW/day	-
<b>Service</b>	\$1.3416 / day	-	1.15 ¢/kW/day	-
<b>TOTAL PRICE</b>	<b>\$1.3416 / day</b>	<b>25.27 ¢/kW/day</b>	<b>20.08 ¢/kW/day</b>	<b>0.47 ¢ / kW.h</b>

The billing demand for the Distribution and Service charges shall be the higher of:

- (a) The highest metered demand during the billing period (including any demand delivered and billed under Price Schedules D32 and D33);
- (b) 85% of the highest metered demand (including any demand delivered and billed under Price Schedules D32 and D33) in the 12-month period including and ending with the billing period;
- (c) the estimated demand;
- (d) the Distribution Contract Demand (DCD);
- (e) 50 kilowatts.

The billing demand for the Transmission charges shall be the higher of:

- (a) The highest metered demand during the billing period (excluding any demand delivered and billed under Price Schedules D32 and D33);
- (b) 85% of the highest metered demand (excluding any demand delivered and billed under Price Schedules D32 and D33) in the 12-month period including and ending with the billing period;
- (c) the estimated demand;
- (d) the Transmission Contract Demand (TCD);

- 
- (e) if any of the above are equal to or greater than 1000 kW, 80% of the highest metered demand (excluding any demand delivered and billed under Price Schedules D32 and D33) in the period which is the shorter of:
- i. the 36-month period including and ending with the current billing period; or
  - ii. the period commencing with the first billing period in the year 2000, and ending with the current billing period.
- (f) 50 kilowatts.

If energy is also taken under Transmission Opportunity Rate (Price Schedule D33), during the billing period, the billing demand will be the Price Schedule D31 **Base Demand** as specified under the corresponding agreement.

For non-demand metered services, demand will be estimated based on equipment nameplate ratings as **kW Billing Demand = kW Nameplate Rating**, or **kW Billing Demand = HP Nameplate x 0.746**.

**Charge for Deficient Power Factor** - For customer power factor which is less than 90%, an additional charge for deficient power factor of 29.59 ¢/kV.A/day will be applied to the difference between the highest metered kV.A demand and 111% of the highest metered kW demand in the same billing period.

### **Application**

1. **Price Options** - the following price options may apply:  
Idle Service (Option F)  
Service for Non-Standard Transformation and Metering Configurations (Option H)  
REA Distribution Price Credit (Option P)
2. **Price Adjustments** - the following price adjustments (riders) may apply:  
Municipal Assessment (Rider A-1)  
Balancing Pool Adjustment (Rider B)  
Special Facilities Charge (Rider E)  
Temporary Adjustment (Rider G)  
Interim Adjustment (Rider J)  
Interim RRT Adjustment (Rider Q)

**Availability**

- For System Access Service, single or three-phase, for all Points of Service throughout the territory served by the Company from the Alberta Interconnected System, that are directly connected to a transmission substation, and do not make any use of distribution facilities owned by ATCO Electric.
- The Point of Service must be equipped with interval data metering.

**Price**

Charges for service in any one billing month shall be the sum of the Demand Charge, Energy Charge and charge for deficient power factor, determined for each individual Point of Service.

	<b>Demand Charge</b>		<b>Energy Charge</b>
	For the first 500 kW of billing demand	For all billing demand over 500 kW	
<b>Transmission</b>	Current AESO DTS Rate Schedule less under frequency load shedding credit	Current AESO DTS Rate Schedule less under frequency load shedding credit	Charges per current AESO DTS Rate Schedule
<b>Distribution</b>	2.09 ¢/kW/day	-	-
<b>Service</b>	2.57 ¢/kW/day	-	-
<b>TOTAL PRICE</b>	<b>4.66 ¢/kW/day + Current AESO DTS Rate Schedule less under frequency load shedding credit</b>	<b>Current AESO DTS Rate Schedule less under frequency load shedding credit</b>	

The billing demand for the Distribution and Service charges shall be the higher of:

- (a) The highest metered demand during the billing period (including any contract opportunity demand delivered and billed under Price Schedule T33);
- (b) 85% of the highest metered demand (including any contract opportunity demand delivered and billed under Price Schedule T33) in the 12-month period including and ending with the billing period;
- (c) the estimated demand;
- (d) 50 kilowatts.

The billing demand for the Transmission charge shall be the higher of:

- (a) The billing demand charged to ATCO Electric by AESO at a Point of Delivery, that is attributable to the customer at that Point of Delivery;
- (b) the highest metered demand during the billing period;
- (c) the ratchet level as set out by the AESO at a Point of Delivery,  
where (a) through (c) exclude any contracted Opportunity Demand delivered and billed under Price Schedule T33;
- (d) the estimated demand;
- (e) the Transmission Contract Demand (TCD);
- (f) 50 kilowatts

The **'highest metered demand'** is defined for the purposes of this price schedule, according to the current approved AESO DTS Rate Schedule.

If energy is also taken under Transmission Opportunity Rate (Price Schedule T33), during the billing period, the billing demand will be the Price Schedule T31 **Base Demand** as specified under the corresponding agreement.

**Charge for Deficient Power Factor** – Power Factor Charges according to the current approved AESO DTS Rate Schedule will apply.

### **Application**

1. **Price Options** - the following price option may apply:  
Service for Non-Standard Transformation and Metering Configurations (Option H)
  
2. **Price Adjustments** - the following price adjustments (riders) may apply:  
Municipal Assessment (Rider A-1)  
Balancing Pool Adjustment (Rider B)  
Special Facilities Charge (Rider E)  
Temporary Adjustment (Rider G)  
Interim Adjustment (Rider J)

**Availability**

- For Points of Service served by the Company from the Alberta Interconnected System, with on-site generating equipment connected to the distribution system, which may be used to supply load at the same site.
- To provide standby power to the on-site load in the event of a forced outage or derate of on-site generating equipment, to provide power for generator startup, and to provide supplemental power if the on-site demand requirements exceed the generator capacity.
- To provide credits to Generators for reduced DTS charges from AESO.
- To charge Generators if the Point of Delivery attracts STS charges from AESO.
- For interconnection of the generator to the distribution system.
- The Point of Service must be equipped with 4-quadrant interval data metering, for both supply and demand, the cost of which will be in addition to the charges under this rate.

**Price**

Charges for service in any one billing month shall be the sum of the Customer Charges, Demand Charges, Energy Charges, Other Charges, Charge for Deficient Power Factor (determined for each individual Point of Service), and Fixed Charges defined below.

	Customer Charge	Demand Charge		Energy Charge
		For the first 500 kW of billing demand	For all billing demand over 500 kW	
<b>Transmission</b>	-	9.55 ¢/kW/day	11.07 ¢/kW/day	0.47 ¢ / kW.h
<b>Distribution</b>	-	15.72 ¢/kW/day	7.86 ¢/kW/day	-
<b>Service</b>	\$1.3416 / day	-	1.15 ¢/kW/day	-
<b>TOTAL PRICE</b>	<b>\$1.3416 / day</b>	<b>25.27 ¢/kW/day</b>	<b>20.08 ¢/kW/day</b>	<b>0.47 ¢ / kW.h</b>

The billing demand for the Distribution and Service charges shall be the higher of:

- (a) The highest metered demand during the billing period (including any demand delivered and billed under Price Schedule D33);
- (b) 85% of the highest metered demand (including any demand delivered and billed under Price Schedule D33) in the 12-month period including and ending with the billing period;
- (c) the estimated demand;
- (d) the Distribution Contract Demand (DCD).

The billing demand for the Transmission charges shall be the higher of:

- (a) The highest metered demand during the billing period (excluding any demand delivered and billed under Price Schedule D33);
- (b) 85% of the highest metered demand (excluding any demand delivered and billed under Price Schedule D33) in the 12-month period including and ending with the billing period;
- (c) the estimated demand;
- (d) the Transmission Contract Demand (TCD);
- (e) if any of the above are equal to or greater than 1000 kW, 80% of the highest metered demand (excluding any demand delivered and billed under Price Schedules D33) in the period which is the shorter of:
  - i. the 36-month period including and ending with the current billing period; or
  - ii. the period commencing with the first billing period in the year 2000, and ending with the current billing period.

If energy is also taken under Transmission Opportunity Rate (Price Schedule D33), during the billing period, the billing demand will be the Price Schedule D32 **Base Demand** as specified under the corresponding agreement.

For non-demand metered services, demand will be estimated based on equipment nameplate ratings as **kW Billing Demand = kW Nameplate Rating**, or **kW Billing Demand = HP Nameplate x 0.746**.

**Charge for Deficient Power Factor** - For customer power factor which is less than 90%, an additional charge for deficient power factor of 29.59 ¢/kV.A/day will be applied to the difference between the highest metered kV.A demand and 111% of the highest billing kW demand in the same billing period, where billing demand is as defined in this price schedule.

If the Company incurs an increase to the Point-of-Delivery (POD) billing demand with AESO as a result of a standby event of the customer (i.e. the new demand at the POD is coincident with an outage of the generator), then an additional charge may apply, equal to the Transmission Demand Charge for Price Schedule T31, multiplied by the incremental POD demand incurred. This charge will apply for the current billing period, and for the next 11 billing periods.

#### **Capital Recovery Charges:**

The cost of the Incremental Interconnection Facilities will be determined as set out in Section 9.6 of the Terms and Conditions for Distribution Service Connections. The total amount will be collected from the customer in accordance with Section 9.8 of the Terms and Conditions for Distribution Service Connections. A contract will be arranged between the customer and the Company, specifying the contract term and the monthly amount, which will be calculated using the Company's Rate of Return, Income Tax and Depreciation in effect at the commencement of the contract term.

The Generating customer will be required to pay all replacement costs for incremental facilities as per Section 9.6 of the Terms and Conditions for Distribution Service Connections.

#### **Incremental Operations and Maintenance Charges:**

The minimum monthly incremental Operations and Maintenance charge will be:

**(0.0128% X Incremental Interconnection Cost) per day**

The Generating customer will be required to pay for switching or isolation as per Section 9.6 of the Terms and Conditions.

**Incremental Administration and General Charges:**

The minimum monthly incremental Administration and General charge will be:

**(0.00422% X Incremental Interconnection Cost) per day**

**Generator Credits for reduction in Billing Determinants at the Point of Delivery:**

**Credit = DTS \* (A – B)                      Where:**

**A** = Monthly Gross Billing Determinants at the POD to which the generator is connected (which will be determined by adding the interval output data metered at the generator to the net interval data metered at the POD).

**B** = Monthly Net Billing determinants at the POD to which the generator is connected.

**DTS** = The charges as per AESO's effective DTS tariff.

The Company will calculate the generator credits on a calendar quarterly basis after all power production information has been provided to the Company in accordance with Section 9.5.4 of the Terms and Conditions for Distribution Service Connections.

**Generator Charges for a Point of Delivery:**

**Charge = STS \* A                              Where:**

**A** = Monthly **Net** Supply Billing determinants at the POS to which the generator is connected.

**STS** = The charges as per AESO's effective STS tariff.

**Application**

- Price Options** - the following price options may apply:  
Idle Service (Option F)  
Service for Non-Standard Transformation and Metering Configurations (Option H)
- Price Adjustments** - the following price adjustments (riders) may apply:  
Municipal Assessment (Rider A-1)  
Balancing Pool Adjustment (Rider B)  
Temporary Adjustment (Rider G)  
Interim Adjustment (Rider J)  
Interim RRT Adjustment (Rider Q)

**Availability**

- Available only to Points of Service which are eligible as determined by AESO for Demand Opportunity Service, throughout the territory served by the Company from the Alberta Interconnected System for loads greater than 1,000 kW.
- Available only when AESO determines that there is sufficient transmission capacity. Service on this rate is interruptible for transmission system security reasons at AESO's request.
- The Point of Service must be equipped with revenue approved time of use metering. The cost of the time of use metering is in addition to the charges in this rate.
- Telemetry is required for all points of service on this rate with demands greater than 2,500 kW, and any associated costs will be in addition to the charges in this rate.

**Price**

Charges for service in any one billing month shall be the sum of the following charges determined for each individual Point of Service. The AESO DOS charges will be applied according to the terms of the DOS option selected by the Customer:

	<b>Customer Charges</b>	<b>Demand Charges</b>	<b>Demand Charges</b>	<b>Energy Charges</b>	<b>Energy Charges</b>
		For all kW of Opportunity Contract Demand	For the peak kW above the Opportunity Contract Demand	For all kW.h metered above the Base Demand, not exceeding the Opportunity Contract Demand	For all kW.h metered above the Opportunity Contract Demand
<b>Transmission</b>	Transaction Charge per AESO DOS Rate Schedule	-	Per Price Schedule D32	Per AESO DOS Rate Schedule	Per Price Schedule D32
<b>Distribution</b>	-	15.72 ¢/kW/day	7.86 ¢/kW/day	-	-
<b>Service</b>	\$1.3416 / day	0.00 ¢/kW/day	1.15 ¢/kW/day	-	-
<b>TOTAL PRICE</b>	<b>\$1.3416 / day + AESO DOS Rate</b>	<b>15.72 ¢/kW/day</b>	<b>9.01 ¢/kW/day + D32</b>	<b>Per AESO DOS Rate Schedule</b>	<b>Per Price Schedule D32</b>

The attached form must be completed and submitted to the Company, and serves as an Opportunity Contract which specifies the period and the Opportunity Demand requested by the Customer, as well as the DOS option selected.

The charges according to the AESO DOS Rate Schedule will be the approved charges in effect during the billing period, and will be revised in accordance with AESO's charges as required.

---

### **Application**

1. **Base Demand** - A Customer qualifying for this rate must establish a Base Demand with the Company on Price Schedule D31 prior to receiving service under this rate (which will be submitted as part of the attached form).
  - (a) For existing Customers, the Price Schedule D31 Base Demand will normally be the maximum billing demand in the 12 most recent billing periods.
  - (b) New Customers qualifying for this rate may select the Large General Service/Industrial D31 Base Demand based on forecast loads and economics, provided the Company agrees that the conditions of applicability are satisfied.
  - (c) Once established, the Price Schedule D31 Base Demand remains fixed for the purposes of billing all future service on this rate.
2. **Applicable Charges** – This rate schedule applies in conjunction with rate D31, in that the first block demand charges apply only to the first 500 kW of the combined demand (i.e. D31 and D33, and D32 should there be an excursion above contracted opportunity demand), and the remainder of the combined demand is subject to the second block demand charges. The Service Customer Charge does not apply again as it has already been applied to the base load on Price Schedule D31.
3. **Options** - A Customer requesting service under this rate must select the provisions of one of AESO's DOS Rate Schedules. The Customer is subject to AESO's minimum Opportunity Service charges, attributable to that customer.
4. **Notice Period** - A Customer requesting service under this rate is required to provide notification as prescribed in the AESO tariff in relation to DOS service.
5. **Load Curtailment** - When a load curtailment directive is given, the load at the point of service must not exceed the Price Schedule D31 Base Demand until the Company gives notification that the interruption period is over, at which time consumption of energy may be resumed.
6. **Non-Compliance Charges** – In the event of a load curtailment directive, if the load served under this rate is not curtailed for the entire interruption period, any charges incurred by the Company will be charged to the Point of Service on this rate.
7. **Price Options** – the following price options may apply:  
Service for Non-Standard Transformation and Metering Configurations (Option H)
8. **Price Adjustments** - the following price adjustments may apply:  
Municipal Assessment (Rider A-1)  
Balancing Pool Adjustment (Rider B)  
Temporary Adjustment (Rider G)  
Interim Adjustment (Rider J)

This form will be completed and signed by ATCO Electric after a telephone request from a Customer for Transmission Opportunity Service. The form will be faxed to the Customer upon which the Customer will confirm the information with a signature and fax the completed form back to ATCO Electric Control Centre – (780) 632-5959.

<b>Customer Name:</b>	<input style="width:100%;" type="text"/>		
<b>Date of Request:</b>	<input style="width:100%;" type="text"/>		
<b>Time of Request:</b>	<input style="width:100%;" type="text"/>		
<b>1. OPPORTUNITY CONTRACT PERIOD:</b>			
<b>Start Date:</b>	<input style="width:100%;" type="text"/>	<b>Start Time:</b>	<input style="width:100%;" type="text"/>
<b>End Date:</b>	<input style="width:100%;" type="text"/>	<b>End Time:</b>	<input style="width:100%;" type="text"/>
	<b>Number of Hours in Contract Period:</b>		<input style="width:100%;" type="text"/> <b>Hours</b>
<b>2. TRANSMISSION OPPORTUNITY SERVICE OPTION:</b>			
AESO "DEMAND OPPORTUNITY SERVICE":	DOS 7 Minutes:	<input style="width:100%;" type="text"/>	
	DOS 1 Hour:	<input style="width:100%;" type="text"/>	
	DOS Term:	<input style="width:100%;" type="text"/>	
<b>3. OPPORTUNITY CONTRACT DEMAND:</b>	<input style="width:100%;" type="text"/>	<b>kW</b>	
<b>4. BASE DEMAND:</b>			
Large General Service/Industrial Price Schedule D31 Base Demand:	<input style="width:100%;" type="text"/>	<b>kW</b>	
Sum of Demands on all Opportunity Service Contracts:	<input style="width:100%;" type="text"/>	<b>kW</b>	
<b>Total Base Demand:</b>	<input style="width:100%;" type="text"/>	<b>kW</b>	

**Confirmation:** 1) \_\_\_\_\_ for ATCO Electric  
 2) \_\_\_\_\_ for \_\_\_\_\_

**Availability**

- For System Access Service, single or three-phase, for all Points of Service throughout the territory served by the Company from the Alberta Interconnected System, that are directly connected to a transmission substation, and do not make any use of distribution facilities owned by ATCO Electric.
- Available only to Points of Service which are eligible as determined by AESO for Demand Opportunity Service, throughout the territory served by the Company from the Alberta Interconnected System for loads greater than 1,000 kW.
- Available only when AESO determines that there is sufficient transmission capacity. Service on this rate is interruptible for transmission system security reasons at AESO's request.
- The point of service must be equipped with revenue approved time of use metering. The cost of the time of use metering is in addition to the charges in this rate.
- Telemetry is required for all points of service on this rate with demands greater than 2,500 kW, and any associated costs will be in addition to the charges in this rate.

**Price**

Charges for service in any one billing month shall be the sum of the following charges determined for each individual Point of Service. The current approved AESO DOS charges will be those according to the terms of the DOS option selected by the Customer:

	<b>Transaction Charge</b>	<b>Demand Charges</b>	<b>Demand Charges</b>	<b>Energy Charges</b>	<b>Energy Charges</b>
		For all kW of Opportunity Contract Demand	For the peak kW above the Opportunity Contract Demand	For all kW.h metered above the Base Demand, not exceeding the Opportunity Contract Demand	For all kW.h metered above the Opportunity Contract Demand
<b>Transmission</b>	Per AESO DOS Rate Schedule	-	Per Price Schedule T31	Per AESO DOS Rate Schedule	Per Price Schedule T31
<b>Distribution</b>	-	Per Price Schedule T31	Per Price Schedule T31	-	-
<b>Service</b>	-	Per Price Schedule T31	Per Price Schedule T31	-	-
<b>TOTAL PRICE</b>	<b>Per AESO DOS Rate Schedule</b>	<b>Per Price Schedule T31</b>	<b>Per Price Schedule T31</b>	<b>Per AESO DOS Rate Schedule</b>	<b>Per Price Schedule T31</b>

The attached form must be completed and submitted to the Company, and serves as an Opportunity Contract which specifies the period and the Opportunity Demand requested by the Customer, as well as the DOS option selected.

The charges according to the AESO DOS Rate Schedule will be the approved charges in effect during the billing period, and will be revised in accordance with AESO's charges as required.

---

**Application**

1. **Base Demand** - A Customer qualifying for this rate must establish a Base Demand with the Company on Price Schedule T31 prior to receiving service under this rate.
  - (a) For existing Customers, the Price Schedule T31 Base Demand will normally be the maximum billing demand in the 12 most recent billing periods.
  - (b) New Customers qualifying for this rate may select the Large General Service/Industrial T31 Base Demand based on forecast loads and economics, provided the Company agrees that the conditions of applicability are satisfied.
  - (c) Once established, the Price Schedule T31 Base Demand remains fixed for the purposes of billing all future service on this rate.
2. **Applicable Charges** - This rate schedule applies in conjunction with rate T31, in that the first block demand charges apply only to the first 500 kW of the combined demand (i.e. T31 and T33, and T31 again should there be an excursion above contracted opportunity demand), and the remainder of the combined demand is subject to the second block demand charges.
3. **Options** - A Customer requesting service under this rate must select the provisions of one of AESO's DOS Rate Schedules. The Customer is subject to AESO's minimum Opportunity Service charges, attributable to that customer.
4. **Notice Period** - A Customer requesting service under this rate is required to provide notification as prescribed in the AESO tariff in relation to DOS service.
5. **Load Curtailment** - When a load curtailment directive is given, the load at the point of service must not exceed the Price Schedule T31 Base Demand until the Company gives notification that the interruption period is over, at which time consumption of energy may be resumed.
6. **Non-Compliance Charges** – In the event of a load curtailment directive, if the load served under this rate is not curtailed for the entire interruption period, any charges incurred by the Company will be charged to the Point of Service on this rate.
7. **Price Options** – the following price option may apply:  
Service for Non-Standard Transformation and Metering Configurations (Option H(d))
8. **Price Adjustments** - the following price adjustments may apply:  
Municipal Assessment (Rider A-1)  
Balancing Pool Adjustment (Rider B)  
Temporary Adjustment (Rider G)  
Interim Adjustment (Rider J)

This form will be completed and signed by ATCO Electric after a telephone request from a Customer for Transmission Opportunity Service. The form will be faxed to the Customer upon which the Customer will confirm the information with a signature and fax the completed form back to ATCO Electric Control Centre – (780) 632-5959.

<b>Customer Name:</b>	<input style="width: 100%;" type="text"/>		
<b>Date of Request:</b>	<input style="width: 100%;" type="text"/>		
<b>Time of Request:</b>	<input style="width: 100%;" type="text"/>		
<b>1. OPPORTUNITY CONTRACT PERIOD</b>			
<b>Start Date:</b>	<input style="width: 100%;" type="text"/>	<b>Start Time:</b>	<input style="width: 100%;" type="text"/>
<b>End Date:</b>	<input style="width: 100%;" type="text"/>	<b>End Time:</b>	<input style="width: 100%;" type="text"/>
<b>Number of Hours in Contract Period:</b>			<input style="width: 100%;" type="text"/> <b>Hours</b>
<b>2. TRANSMISSION OPPORTUNITY SERVICE OPTION:</b>			
AESO "DEMAND OPPORTUNITY SERVICE":		DOS 7 Minutes:	<input style="width: 100%;" type="text"/>
		DOS 1 Hour:	<input style="width: 100%;" type="text"/>
		DOS Term:	<input style="width: 100%;" type="text"/>
<b>3. OPPORTUNITY CONTRACT DEMAND:</b>			
	<input style="width: 100%;" type="text"/>	<b>kW</b>	
<b>4. BASE DEMAND:</b>			
Large General Service/Industrial Price Schedule T31 Base Demand:		<input style="width: 100%;" type="text"/>	<b>kW</b>
Sum of Demands on all Opportunity Service Contracts:		<input style="width: 100%;" type="text"/>	<b>kW</b>
<b>Total Base Demand:</b>		<input style="width: 100%;" type="text"/>	<b>kW</b>

**Confirmation:**    1) \_\_\_\_\_ for ATCO Electric  
                           2) \_\_\_\_\_ for \_\_\_\_\_

**Availability**

For Distribution Access Service, single or three-phase, for all Points of Service throughout the territory served by the Company from an isolated industrial area.

**Price**

Charges for service in any one billing month shall be the sum of the Customer Charge, Demand Charge, and Charge for Deficient Power Factor, determined for each individual Point of Service.

	Customer Charge	Demand Charge	
		For the first 500 kW of billing demand	For all billing demand over 500 kW
<b>Distribution</b>	-	15.72 ¢/kW/day	7.86 ¢/kW/day
<b>Service</b>	\$1.3416 / day	-	1.15 ¢/kW/day
<b>TOTAL PRICE</b>	<b>\$1.3416 / day</b>	<b>15.72 ¢/kW/day</b>	<b>9.01 ¢/kW/day</b>

The billing demand for the Distribution and Service charges shall be the higher of:

- (a) The highest metered demand during the billing period;
- (b) 85% of the highest metered demand during the 12-month period including and ending with the billing period;
- (c) the estimated demand;
- (d) the Distribution Contract Demand (DCD);
- (e) 50 kilowatts.

For non-demand metered services, demand will be estimated based on equipment nameplate ratings as **kW Billing Demand = kW Nameplate Rating**, or **kW Billing Demand = HP Nameplate x 0.746**.

**Charge for Deficient Power Factor** - For customer power factor which is less than 90%, an additional charge for deficient power factor of 29.59 ¢/kV.A/day will be applied to the difference between the highest metered kV.A demand and 111% of the highest metered kW demand in the same billing period.

**Application**

- 1. **Price Options** - the following price options may apply:  
 Idle Service (Option F)  
 Service for Non-Standard Transformation and Metering Configurations (Option H)  
 REA Distribution Price Credit (Option P)
- 2. **Price Adjustments** - the following price adjustments (riders) may apply:  
 Municipal Assessment (Rider A-1)  
 Special Facilities Charge (Rider E)  
 Temporary Adjustment (Rider G)  
 Interim Adjustment (Rider J)

**Availability**

For System Access Service and Distribution Access Service, single or three-phase, for all Points of Service throughout the territory served by the Company from the Alberta Interconnected System, for production energy requirements in the petroleum and natural gas industries including related operations, such as rectifiers, cathodic protection and radio transmitters.

**Price**

Charges for service in any one billing month shall be the sum of the Customer Charges, Demand Charges, Energy Charges and charge for deficient power factor, determined for each individual Point of Service.

	<b>Customer Charge</b>	<b>Demand Charge</b>	<b>Energy Charge</b>
<b>Transmission</b>	-	8.30 ¢/kW/day	0.47 ¢ / kW.h
<b>Distribution</b>	-	36.18 ¢/kW/day	-
<b>Service</b>	74.30 ¢ / day	-	-
<b>TOTAL PRICE</b>	<b>74.30 ¢ / day</b>	<b>44.48 ¢/kW/day</b>	<b>0.47 ¢ / kW.h</b>

The billing demand for the Distribution and Service charges shall be the higher of:

- (a) The highest metered demand during the billing period;
- (b) 85% of the highest metered demand during the 12-month period including and ending with the billing period;
- (c) the estimated demand;
- (d) the Distribution Contract Demand (DCD);
- (e) 4 kilowatts.

The billing demand for the Transmission charges shall be the higher of:

- (a) The highest metered demand during the billing period;
- (b) 85% of the highest metered demand during the 12-month period including and ending with the billing period;
- (c) the estimated demand;
- (d) the Transmission Contract Demand (TCD);
- (e) 4 kilowatts.

For non-demand metered services, demand will be estimated based on equipment nameplate ratings as **kW Billing Demand = kW Nameplate Rating**, or **kW Billing Demand = HP Nameplate x 0.746**.

The 85% ratchet applies only to demand metered loads. The cost of converting an energy meter to a demand meter will be in addition to the charges on this rate.

**Estimated Demands** - Where it is impractical to meter a point of service, the Company may bill on the basis of estimated maximum demands. In such case, the monthly bill shall be the demand charge above applied to the estimated demand, plus a flat rate of \$1.47 per kW in lieu of the charge for energy.

The **Metered demand** will be the greater of the registered demand in kW, or 90% of the registered demand in kV.A where a kW reading is not available.

**Charge for Deficient Power Factor** - where a Customer's power factor is found to be less than 90%, the Company may require such Customers to install corrective equipment. For Customer power factor which is less than 90%, an additional charge for deficient power factor of 29.59 ¢/kV.A/day will be applied to the difference between the highest metered kV.A demand and 111% of the highest metered kW demand in the same billing period.

### **Application**

1. **Demand Metered** - where services are demand metered, the meter will normally be read and reset at least once every two months.
2. **Price Options** - the following price option may apply:  
Idle Service (Option F)
3. **Price Adjustments** - the following price adjustments (riders) may apply:  
Municipal Assessment (Rider A-1)  
Balancing Pool Adjustment (Rider B)  
Special Facilities Charge (Rider E)  
Temporary Adjustment (Rider G)  
Interim Adjustment (Rider J)  
Interim RRT Adjustment (Rider Q)

---

### **Availability**

For Distribution Access Service, single or three-phase, for all Points of Service throughout the territory served by the Company from an isolated industrial area, for production energy requirements in the petroleum and natural gas industries including related operations, such as rectifiers, cathodic protection and radio transmitters.

### **Price**

Charges for service in any one billing month shall be the sum of the Customer Charges, Demand Charges, and charge for deficient power factor, determined for each individual Point of Service:

	<b>Customer Charge</b>	<b>Demand Charge</b>
<b>Distribution</b>	-	36.18 ¢/kW/day
<b>Service</b>	74.30 ¢ / day	-
<b>TOTAL PRICE</b>	<b>74.30 ¢ / day</b>	<b>36.18 ¢/kW/day</b>

The billing demand shall be the higher of:

- (a) The highest metered demand during the billing period;
- (b) 85% of the highest metered demand during the 12-month period including and ending with the billing period;
- (c) the estimated demand;
- (d) the Distribution Contract Demand (DCD);
- (e) 4 kilowatts.

For non-demand metered services, demand will be estimated based on equipment nameplate ratings as **kW Billing Demand = kW Nameplate Rating**, or **kW Billing Demand = HP Nameplate x 0.746**.

The 85% ratchet applies only to demand metered loads. The cost of converting an energy meter to a demand meter will be in addition to the charges on this rate.

**Estimated Demands** - Where it is impractical to meter a point of service, the Company may bill on the basis of estimated maximum demands. In such case, the monthly bill shall be the demand charge above applied to the estimated demand.

The **Metered demand** will be the greater of the registered demand in kW, or 90% of the registered demand in kV.A where a kW reading is not available.

**Charge for Deficient Power Factor** - where a Customer's power factor is found to be less than 90%, the Company may require such Customers to install corrective equipment. For Customer power factor which is less than 90%, an additional charge for deficient power factor of 29.59 ¢/kV.A/day will be applied to the difference between the highest metered kV.A demand and 111% of the highest metered kW demand in the same billing period.

**Application**

1. **Demand Metered** - where services are demand metered, the meter will normally be read and reset at least once every two months.
2. **Price Options** - the following price options may apply:  
Idle Service (Option F)
3. **Price Adjustments** - the following price adjustments (riders) may apply:  
Municipal Assessment (Rider A-1)  
Special Facilities Charge (Rider E)  
Temporary Adjustment (Rider G)  
Interim Adjustment (Rider J)

**Availability**

For System Access Service and Distribution Access Service, for all Points of Service throughout the territory served by the Company, for farming operations which are connected to a Rural Electrification Association's distribution system.

**Price**

- Charges for service in any one billing month are the sum of the Customer, Demand and Energy charges as indicated below, determined for each individual Point of Service.
- Please refer to individual REA Tariffs to determine applicable REA charges.

**REA Farms in O & M Pool**

	Customer Charge	Demand Charge	Energy Charge
<b>Transmission</b>	-	6.30 ¢/kV.A/day	0.47 ¢ / kW.h
<b>Distribution</b>	-	7.03 ¢/kV.A/day	-
<b>Service</b>	38.85 ¢ / service / day	-	-
<b>REA Specific Charges</b>	See REA Tariff	-	-
<b>Total Price</b>	<b>C<sub>1</sub> ¢ / service/ day</b>	<b>13.33 ¢/kV.A/day</b>	<b>0.47 ¢ / kW.h</b>

**REA Farms Outside of O & M Pool**

	Customer Charge	Demand Charge	Energy Charge
<b>Transmission</b>	-	6.30 ¢/kV.A/day	0.47 ¢ / kW.h
<b>Distribution</b>	See REA Tariff	See REA Tariff	-
<b>Service</b>	See REA Tariff	-	-
<b>REA Specific Charges</b>	See REA Tariff	-	-
<b>Total Price</b>	<b>C<sub>1</sub> ¢ / service /day</b>	<b>D<sub>1</sub> ¢/kV.A/day</b>	<b>0.47 ¢ / kW.h</b>

kV.A capacity for billing purposes will be determined as follows:

- (a) For breakered services of 25 kV.A or less, the kV.A capacity will be set by the breaker size as shown below:

Breaker Amperes	25/41	35/50	50/75	75/110	100/150	200
<b>Transformer Capacity in kV.A</b>	3	5	7.5	10	15	25

- 
- (b) For non-breakered REA farm services of 25 kV.A or greater, the kV.A capacity for billing purposes is the greater of:
- i. the highest metered kV.A demand during the billing period;
  - ii. the estimated demand;
  - iii. 25 kV.A.

**REA Specific Charges**

Other charges are applied on behalf of the REAs as defined in contracts and are subject to change from time to time.

These charges include operation and maintenance charges and deposit reserve charges, and are in addition to the charges contained in this price schedule.

The minimum monthly charge is the sum of the Customer and demand charges plus any REA specific charges that may apply.

**Application**

1. **Demand Metering** - when the Company determines, by estimation or measurement, that a 25 kV.A breakered service may be overloaded, the company may require replacement of the breaker with a demand meter and modification of the service facilities in accordance with the Terms and Conditions.
2. **Price Option** - the following price option may apply:  
Idle Service (Option F)
3. **Price Adjustments** - the following price adjustments (riders) may apply:  
Balancing Pool Adjustment (Rider B)  
Temporary Adjustment (Rider G)  
Interim Adjustment (Rider J)

**Availability**

- Applicable to any Rural Electrification Association, for whom the Company is not acting as the Wire Services Provider, as defined in the EUA.
- For all Points of Service throughout the territory served by the Company, for farming operations which are connected to the Rural Electrification Association's distribution system.

**Price**

Charges for service in any one billing month are the sum of the Customer, Demand and Energy charges as indicated below, determined for each individual Point of Service.

	Customer Charge	Demand Charge	Energy Charge
<b>Transmission</b>	-	6.30 ¢/kV.A/day	0.47 ¢ / kW.h
<b>Distribution</b>	-	-	-
<b>Service</b>	20.24 ¢/service/day	-	-
<b>TOTAL PRICE</b>	<b>20.24 ¢/service/day</b>	<b>6.30 ¢/kV.A/day</b>	<b>0.47 ¢ / kW.h</b>

kV.A capacity for billing purposes will be determined as follows:

- (a) For breakered services of 25 kV.A or less, the kV.A capacity will be set by the breaker size as shown below:

Breaker Amperes	25/41	35/50	50/75	75/110	100/150	200
<b>Transformer Capacity in kV.A</b>	3	5	7.5	10	15	25

- (b) For non-breakered REA farm services of 25 kV.A or greater, the kV.A capacity for billing purposes is the greater of:
- i. the highest metered kV.A demand during the billing period;
  - ii. the estimated demand;
  - iii. 25 kV.A.

The minimum monthly charge is the sum of the Customer and Demand charge.

**Application**

1. **Demand Metering** - when the Company determines, by estimation or measurement, that a 25 kV.A breakered service may be overloaded, the company may require replacement of the breaker with a demand meter and modification of the service facilities in accordance with the Terms and Conditions.
2. **Price Option** - the following price option may apply:  
 Idle Service (Option F)
3. **Price Adjustments** - the following price adjustments (riders) may apply:  
 Balancing Pool Adjustment (Rider B)  
 Temporary Adjustment (Rider G)  
 Interim Adjustment (Rider J)  
 Interim RRT Adjustment (Rider Q)

**Availability**

For System Access Service and Distribution Access Service, for all Points of Service throughout the territory served by the Company, for farming operations which are connected to the Company's distribution system.

**Price**

Charges for service in any one billing month are the sum of the Customer, Demand, and Energy Charges as indicated below, determined for each individual Point of Service.

	Customer Charge	Demand Charge	Energy Charge
<b>Transmission</b>	-	6.30 ¢/kV.A/day	0.47 ¢ / kW.h
<b>Distribution</b>	15.83 ¢/service/day	10.89 ¢/kV.A/day	0.51 ¢ / kW.h
<b>Service</b>	38.85 ¢/service/day	-	-
<b>TOTAL PRICE</b>	<b>54.68 ¢/service/day</b>	<b>17.19 ¢/kV.A/day</b>	<b>0.98 ¢ / kW.h</b>

kV.A capacity for billing purposes will be determined as follows:

- (a) For breakered services of 25 kV.A or less, the kV.A capacity will be set by the breaker size as shown below:

Breaker Amperes	25/41	35/50	50/75	75/110	100/150	200
<b>Transformer Capacity in kV.A</b>	3	5	7.5	10	15	25

- (b) For non-breakered farm services of 25 kV.A or greater, the kV.A capacity for billing purposes is the greater of:
- i. the highest metered kV.A demand during the billing period;
  - ii. the estimated demand;
  - iii. the contract demand;
  - iv. 25 kV.A.

The minimum monthly charge is the sum of the Customer and Demand Charges.

**Application**

1. **Demand Metering** - when the Company determines, by estimation or measurement, that a 25 kV.A breakered service may be overloaded, the company may require replacement of the breaker with a demand meter and modification of the service facilities in accordance with the Terms and Conditions for Distribution Service Connections.
2. **Price Options** - the following price option may apply:  
Idle Service (Option F)
3. **Price Adjustments** - the following price adjustments (riders) may apply:  
Balancing Pool Adjustment (Rider B)  
Temporary Adjustment (Rider G)  
Interim Adjustment (Rider J)  
Interim RRT Adjustment (Rider Q)

**Availability**

- For System Access Service and Distribution Access Service for all Points of Service throughout the territory served by the Company, for street lighting.
- Not available for private lighting.

**Price**

Charges for service in any one billing month are the sum of the Customer Charge and Demand Charge, determined for each individual Point of Service.

**Decorative Lighting (61 A)**

- For decorative lighting fixtures installed, owned and maintained by the Company.
- The customer is responsible for the full cost of installation.
- Includes maintenance only.
- Specific contracts may require customers to purchase and maintain inventory of decorative lamps if the customer's lighting fixtures are not the same as the standard used by the company.

---

<b>Decorative Lamps</b>		
	<b>Customer Charge</b>	<b>Demand Charge</b>
<b>Transmission</b>	-	0.021 ¢ /watt/day
<b>Distribution</b>	19.93 ¢/fixture/day	0.011 ¢ /watt/day
<b>Service</b>	1.78 ¢/fixture/day	-
<b>TOTAL PRICE</b>	<b>21.71 ¢/fixture/day</b>	<b>0.032¢ /watt/day</b>

---

**Investment Option (61 B)**

- For standard lighting fixtures installed, owned, and maintained by the Company.

---

<b>All Lamps</b>		
	<b>Customer Charge</b>	<b>Demand Charge</b>
<b>Transmission</b>	-	0.021 ¢ /watt/day
<b>Distribution</b>	42.19 ¢/fixture/day	0.011 ¢ /watt/day
<b>Service</b>	1.78 ¢/fixture/day	-
<b>TOTAL PRICE</b>	<b>43.97 ¢/fixture/day</b>	<b>0.032 ¢ /watt/day</b>

---

**Distribution Investment Option (61 C)**

- For customer owned and installed lighting.
- For installation and maintenance of distribution facilities up to, but not including the customer owned conductor serving the light fixtures.
- The Company may require that the Point of Service be metered and served on Price Schedule D21, if the load requirements change over time, or if loads that are not lighting loads are served from the same Point of Service.

	<b>All Lamps</b>	
	<b>Customer Charge</b>	<b>Demand Charge</b>
<b>Transmission</b>	-	0.021 ¢ /watt/day
<b>Distribution</b>	26.36 ¢/fixture/day	0.011 ¢ /watt/day
<b>Service</b>	1.78 ¢/fixture/day	-
<b>TOTAL PRICE</b>	<b>28.14 ¢/fixture/day</b>	<b>0.032 ¢ /watt/day</b>

**No Investment Option (61 D) (This option is no longer available)**

- The customer is responsible for the full cost of installation.
- The customer is responsible for the full cost of replacement.
- Includes maintenance only.
- This portion of the rate is closed to new Points of Service and will be phased out by the end of 2005.
- All customers served under Option 61D may at any time between January 1, 2005 and December 31, 2005, elect to have service billed under Option 61E or Option 61B.

<b>YEAR:</b>	<b>All Lamps</b>	
<b>2005</b>	<b>Customer Charge</b>	<b>Demand Charge</b>
Transmission	-	0.31¢ /watt
Distribution	\$5.22	0.33¢ /watt
Service	\$0.51	-
<b>TOTAL PRICE</b>	<b>\$5.73 / fixture</b>	<b>0.64¢ / watt of billing demand</b>

**No Investment Option (61 E)**

- Available for new installations only.
- For lighting fixtures installed, owned and maintained by the Company.
- The customer is responsible for the full cost of installation.
- The customer is responsible for the full cost of replacement.
- Includes maintenance only.

---

	<b>All Lamps</b>	
	<b>Customer Charge</b>	<b>Demand Charge</b>
Transmission	-	0.021 ¢ /watt/day
Distribution	19.30 ¢/fixture/day	0.011 ¢ /watt/day
Service	1.78 ¢/fixture/day	-
<b>TOTAL PRICE</b>	<b>21.08 ¢/fixture/day</b>	<b>0.032 ¢ /watt/day</b>

---

**Application**

1. **Price Option** - the following price option may apply:  
Idle Service (Option F)
2. **Price Adjustments** – the following price adjustments (riders) may apply:  
Municipal Assessment (Rider A-1)  
Balancing Pool Adjustment (Rider B)  
Temporary Adjustment (Rider G)  
Interim Adjustment (Rider J)  
Interim RRT Adjustment (Rider Q)

**Availability**

For System Access Service and Distribution Access Service for all Points of Service throughout the territory served by the Company, for sentinel lighting.

**Price**

Charges for service in any one billing month are the sum of the Customer Charge and Demand Charge determined for each individual Point of Service.

**Investment Option (63 A)**

For standard sentinel lighting fixtures installed, owned, and maintained by the Company

	<b>Customer Charge</b>	<b>Demand Charge</b>
Transmission	-	0.021 ¢ /watt/day
Distribution	13.36 ¢/fixture/day	0.014 ¢ /watt/day
Service	18.89 ¢/fixture/day	-
<b>TOTAL PRICE</b>	<b>32.25 ¢/ fixture/day</b>	<b>0.035 ¢ / watt/day</b>

**Summer Village Option (63 B)**

- For standard sentinel lighting fixtures installed, owned and maintained by the Company
- For seasonal use only (six month minimum period) by Municipal Corporations in summer villages.
- This portion of the rate is closed.

	<b>Customer Charge</b>	<b>Demand Charge</b>
Transmission	-	0.021 ¢ /watt/day
Distribution	21.26 ¢/fixture/day	0.014 ¢ /watt/day
Service	18.89 ¢/fixture/day	-
<b>TOTAL PRICE</b>	<b>40.15 ¢/fixture/day</b>	<b>0.035 ¢ / watt/day</b>

**No Investment Option (63 C)**

- Available for new installations only.
- For standard lighting fixtures installed, owned, and maintained by the Company.
- The customer is responsible for the full cost of installation.
- The customer is responsible for the full cost of replacement.
- Includes maintenance only.

---

	<b>Customer Charge</b>	<b>Demand Charge</b>
Transmission	-	0.021 ¢ /watt/day
Distribution	7.06 ¢/fixture/day	0.004 ¢ /watt/day
Service	18.89 ¢/fixture/day	-
<b>TOTAL PRICE</b>	<b>25.95 ¢/fixture/day</b>	<b>0.025 ¢ / watt/day</b>

---

---

**Metering Option (63 D)**

- For standard lighting fixtures installed, owned, and maintained by the Company.
- For service through the meter at the Point of Service.
- This portion of the rate is closed.

---

	<b>Customer Charge</b>	<b>Demand Charge</b>
Transmission	-	0.021 ¢ /watt/day
Distribution	14.02 ¢/fixture/day	0.014 ¢ /watt/day
Service	18.89 ¢/fixture/day	-
<b>TOTAL PRICE</b>	<b>32.91 ¢/fixture/day</b>	<b>0.035 ¢ / watt/day</b>

---

---

**Distribution Investment Option (63 E)**

- For customer owned and installed lighting.
- For installation and maintenance of distribution facilities up to, but not including the customer owned conductor serving the light fixtures.
- The Company may require that the Point of Service be metered and served on Price Schedule D21, if the load requirements change over time, or if loads that are not lighting loads are served from the same Point of Service.

	<b>Customer Charge</b>	<b>Demand Charge</b>
Transmission	-	0.021 ¢ /watt/day
Distribution	9.15 ¢/fixture/day	0.014 ¢ /watt/day
Service	18.89 ¢/fixture/day	-
<b>TOTAL PRICE</b>	<b>28.04 ¢/fixture/day</b>	<b>0.035 ¢ / watt/day</b>

**Application**

1. **Price Adjustments** - the following price adjustments (riders) may apply:  
Municipal Assessment (Rider A-1)  
Balancing Pool Adjustment (Rider B)  
Temporary Adjustment (Rider G)  
Interim Adjustment (Rider J)  
Interim RRT Adjustment (Rider Q)

**Availability**

The Idle Service charge will apply to all Price Schedules listed below for Points of Service served by the Company throughout the territory when the Point of Service is temporarily disconnected with the intention of restoring service at a future date.

**Price Adjustment**

The Idle Service charges shall be:

<b>Price Schedule</b>	<b>Applicability</b>	<b>Idle Service Charge</b>
D11	Service outside cities, towns, villages, hamlets, Indian reserves and Metis settlements	The price schedule monthly Distribution Customer Charge plus the Transmission Customer Charge.
D21 D22	Service outside cities, towns, villages, hamlets, Indian reserves and Metis settlements	The sum of the Distribution Demand Charge plus the Transmission Demand Charge where:  (a) Distribution Demand Charge is the greater of the contract demand or rate minimum, and  (b) Transmission Demand Charge is the price schedule rate minimum
D24 D34 D44	All Points of Service	The sum of the Distribution Demand Charge where the Distribution Demand Charge is the greater of the contract demand or rate minimum.
D25 D26	Does not apply (no charges apply when Point of Service is placed on idle).	Does not apply (no charges apply when Point of Service is placed on idle).
D31 D32 D41	All Points of Service	The sum of the Distribution Demand Charge plus the Transmission Demand Charge where:  (a) Distribution Demand Charge is the greater of the contract demand or rate minimum, and  (b) Transmission Demand Charge is the greater of the contract demand or rate minimum
D33	All Points of Service	Charges based on base demand level established under Price Schedule D31.
T31	Does not apply (no charges apply when Point of Service is placed on idle).	Does not apply (no charges apply when Point of Service is placed on idle).
T33	Does not apply (no charges apply when Point of Service is placed on idle).	Does not apply (no charges apply when Point of Service is placed on idle).
D51 D52 D56	All Points of Service	The sum of the Distribution Customer charge and the Distribution and Transmission Demand Charges applicable to a 3 kV.A service.
D61	All Points of Service	The sum of the Distribution Demand Charge plus the Transmission Demand Charge
D63	Does not apply (no charges apply when Point of Service is placed on idle).	Does not apply (no charges apply when Point of Service is placed on idle).

---

**Application**

1. If the Customer's Point of Service is reconnected within 12 months of disconnection, the minimum monthly charge for each month of disconnection will be applied to the Point of Service.
2. For further information on idle services, refer to Terms and Conditions 14.1 – Disconnection and Idle Service.

The Retailer will be responsible for any costs that the Company incurs from AESO as a result of a point of service going idle. If the point of service is not enrolled with a Retailer, the costs incurred from AESO will be charged directly to the Customer.

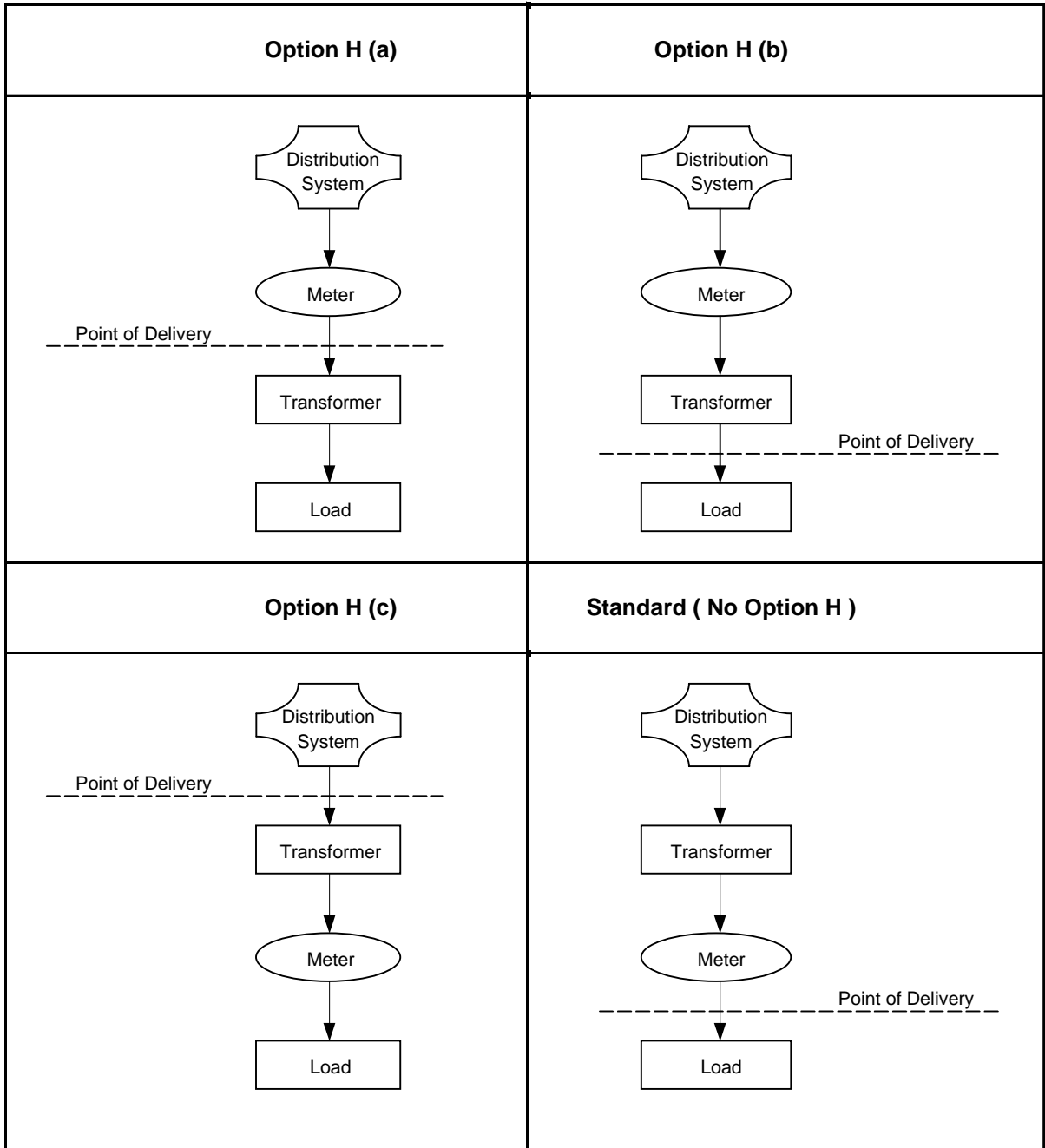
**Availability**

- For Points of Service throughout the territory served by the Company under Price Schedule D21, D22, D31, T31, D32 where metering and / or delivery voltage are non-standard.
- Standard service for distribution connected customers is delivered and metered at the utilization voltage. When delivery or metering is necessary at other voltages, for the convenience of either the customer or the Company, bills for service will be adjusted as outlined below in (a) to (c).
- Standard service for transmission connected customers is delivered to the customer and metered at the substation voltage. When delivery is required at lower voltages, bills for service will be adjusted as outlined below in (d). Section (b) may also apply to transmission connected customers.

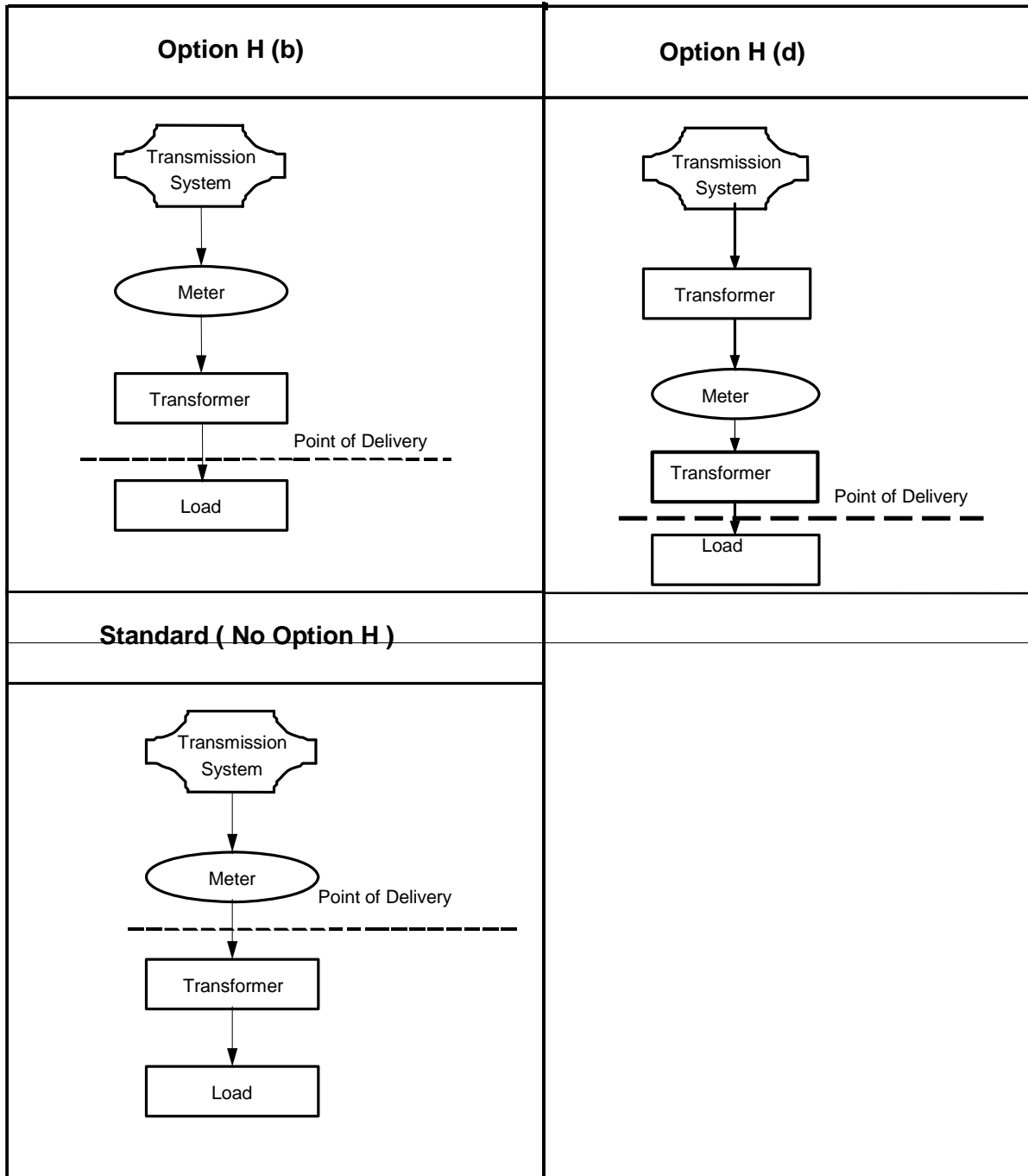
**Price Adjustment**

- (a) If the point of delivery and metering is on the primary side (25 kV) of a transformer (including cases where one-point service is required by the customer for more than a single utilization voltage or point of use), and the customer owns or rents the necessary transformer(s), a **discount of 2.44 ¢/kW/day** of billing demand will be applied. This adjustment does not apply to customers connected directly to the transmission system who are exempt from the Distribution Charge on the applicable rate.
- (b) If primary or higher voltage delivery metering is desirable for the convenience of the Company, or to improve accessibility, etc., **demand and energy measurements will be reduced by 1%** so as to approximate secondary voltage delivery conditions.
- (c) If primary or higher voltage delivery is made to customer owned transformers, but metering is at secondary or utilization voltage for the Company's convenience, **demand and energy measurements will be increased by 1%** so as to approximate primary or transmission voltage delivery conditions and **a discount, as specified in (a)** shall apply.
- (d) Customers who are connected directly to the transmission system, but take service from the low side of a transformer (with primary side 25kV), and do not own or rent any necessary transformer(s), and are exempt from the Distribution Charge on the applicable rate, a **surcharge of 2.44 ¢/kW/day** of billing demand will apply.

### Schematic of Metering and Transformation Configurations for Option H Definitions (Distribution Connected Customers)



### Schematic of Metering and Transformation Configurations for Option H Definitions (Transmission Connected Customers)



**Availability**

For all Pooled O&M REA Farm Points of Service throughout the territory served by the Company, served under Price Schedule D21 or Price Schedule D31.

**Price Adjustment**

**Standard Small General Service Price Schedule D21**

For REA farm Points of Service electing to take service under Small General Service Price Schedule D21, a credit adjustment of 49% will be applied to the base bill.

**Large General Service / Industrial Price Schedule D31**

For REA farm Points of Service electing to take service under Large General Service / Industrial Price Schedule D31, a credit adjustment of 37% will be applied to the base bill.

**Availability**

- Applicable throughout the territory served by the Company to electric service within the municipalities identified in Table 2.
- The following are exempt from the surcharge:
  - (a) Farm customers (Price Schedules D51, D52 and D56)
  - (b) Irrigation Pumping customers (Price Schedule D25 and D26)
  - (c) Customers within Indian Reservations not listed in Table 2
  - (d) Special Facilities Charge (Rider E) customers

**Price Adjustment**

- The Company pays to a municipality each year or month, in accordance with the franchise agreement between the Company and the municipality, a percent of the gross revenue, or wires revenue, of the Company derived from the sale or delivery of electricity to the consumers in the municipality.
- The percentage of gross revenue (franchise fee and/or tax), or wires revenue, to be paid by the Company to its franchised municipalities is given by category number in Table 1. The municipalities, and their category numbers, are listed in Table 2. For Category 7 the municipalities and percentages of yearly wires revenue are listed in Table 3. For Category 8 the municipalities and percentages of monthly wires revenue are listed in Table 4.
- For all categories except Category 8, an estimated surcharge will be added to each customer's bill within a municipality in order to recover the above payments. Adjustments will be made once each year for any difference between the estimated surcharge collected and the actual surcharge required.
- For Category 8, the percentages listed in Table 4 will be applied to the monthly billing. The amount billed will be paid to the municipality in accordance with the franchise agreement between the Company and the municipality.

**Table 1 – Percent of Gross Revenue by Category**

<b>CATEGORY 1</b>	2% of the first \$100,000 of gross revenue; 3% of the next \$200,000 of gross revenue; 4% of the next \$200,000 of gross revenue; 5% of gross revenue in excess of \$500,000.
<b>CATEGORY 5</b>	1.0% of the first \$100,000 of gross revenue; 1.5% of the next \$200,000 of gross revenue; 2.0% of the next \$200,000 of gross revenue; 2.0% of gross revenue in excess of \$500,000.
<b>CATEGORY 6</b>	An amount equal to taxes assessed pursuant to the Municipal Government Act Chap. M-26. 1.
<b>CATEGORY 7</b>	A percentage of the wires revenue of a municipality as listed in Table 3.
<b>CATEGORY 8</b>	A percentage of monthly wires revenue of a municipality as listed in Table 4.

**Table 2 – Category Numbers of Municipalities**

Alliance 8, 6	Empress 7,6	Jasper Nat'l Park 5	Sexsmith 7
Andrew 7 8, 6	Fairview 8, 6	Kinuso 8, 6	Slave Lake 7
Beaverlodge 7	Falher 8,6	Kitscoty 7, 6	Smoky Lake 8, 6
Berwyn 7	Forestburg 7	Linden 8, 6	Spirit River 8, 6
Big Valley 7	Fort McMurray 7	Lloydminster 7, 6	St Paul 8, 6
Bonnyville 8, 6	Fox Creek 8, 6	Manning 7	Stettler 7,6
Botha 7	Gadsby 6	Mannville 8, 6	Swan Hills 8,6
Carbon 7	Galahad 7	Marwayne 8,6	Three Hills 8, 6
Castor 7	Girouxville 7	McLennan 7	Trochu 8, 6
Cereal 7	Glendon 8, 6	Minburn 6	Two Hills 8, 6
Cold Lake 8, 6	Grande Cache 8, 6	Morrin 7	Valleyview 8,6
Consort 7	Grande Prairie 7 8, 6	Mundare 6	Vegreville 6
Coronation 8, 6	Grimshaw 7	Munson 7,6	Vermilion 8, 6
Delburne 7	Halkirk 8, 6	Myrnam 6	Veteran 7 8, 6
Delia 8, 6	Hanna 8, 6	Nampa 7	Vilna 8, 6
Derwent 6	Heisler 8, 6	Oyen 7	Waskatenau 6
Dewberry 8, 6	High Level 8, 6	Paradise Valley 8,6	Wembley 7
Donalda 8, 6	High Prairie 7	Peace River 8,6	Willingdon 6
Donnelly 7	Hines Creek 7	Radway (County 7) 7	Youngstown 7, 6
Drumheller 8,6	Hythe 7	Rainbow Lake 8, 6	
Elk Point 8, 6	Innisfree 8,6	Rosalind 8, 6	
Elnora 8, 6	ID Jasper 7	Rycroft 7	

**Table 2 – Category Numbers of Municipalities**

Category 6 also applies to the following non-franchised municipalities:

Bonnyville Beach	County No. 30 Lamont	M.D. of Peace No. 135
Horseshoe Bay	County No. 89 Lakeland	M.D. of Fairview No. 136
Lavoy	M.D. of Greenview No. 16	I.D. No. 12 & ID No. 24
Pelican Narrows	M.D. of Opportunity No. 17	Allison Bay B219
Rochon Sands	M.D. of Wood Buffalo No. 18	Fort McMurray Band B352
Wanham	M.D. of Birch Hills No. 19	Peavine N172
Warspite	M.D. of Saddle Hills No. 20	Gift Lake N173
Whitesands	M.D. of Clear Hills No. 21	East Prairie N174
County No. 01 Grande Pr.	M.D. of Northern Lights No. 22	Elizabeth N187
County No. 06 Stettler	M.D. of MacKenzie No. 23	Fishing Lake N188
County No. 07 Thornhill	M.D. of Acadia No. 34	Paddle Prairie N221
County No. 13 Smoky Lake	M.D. of Starland No. 47	Special Areas
County No. 16 Wheatland	M.D. of Kneehill No. 48	Sturgeon Lake I.R. #154
County No. 18 Paintearth	M.D. of Bonnyville No. 87	Whitefish Lake Band B924
County No. 19 St. Paul	M.D. of Bonnyville Annexed No. 88	Busche River I.R. No. 207*
County No. 21 Two Hills	M.D. of Lesser Slave River No. 124	Hay Lake I.R. No. 209*
County No. 22 Camrose	M.D. of Big Lake No. 125	Upper Hay River I.R. No. 212*
County No. 23 Red Deer	M.D. of Smoky R. No. 130	Doghead I.R. No. 218*
County No. 24 Vermilion R.	M.D. of Northern Sunrise County	Bigstone Wabasca I.R. No. 166*
County No. 27 Minburn	M.D. of Spirit River No. 133	Loon River Cree I.R.*
County No. 29 Flagstaff		

\* Additional Municipalities

**Table 3 – Percent of Wires Revenue by Municipality (Category 7)**

Beaverlodge	7.20%	Grimshaw	7.50%	Munson	3.00%
Big Valley	3.75%	High Prairie	7.80%	Nampa	5.00%
Botha	4.50%	Hines Creek	6.50%	Oyen	7.75%
Carbon	3.50%	Hythe	7.25%	Radway (County 7)	3.00%
Cereal	5.00%	Jasper (ID)	7.50%	Rycroft	4.30%
Delburne	3.75%	Kitscoty	5.00%	Sexsmith	8.20%
Donnelly	5.00%	Lloydminster	13.00%	Slave Lake	8.70%
Fort McMurray	7.60%	Manning	7.50%	Stettler	7.50%
Galahad	6.75%	McLennan	8.25%	Wembley	6.70%
Girouxville	7.00%	Morrin	6.00%	Youngstown	4.00%

**Table 4 – Percent of Monthly Wires Revenue by Municipality (Category 8)  
Paid in addition to other taxes**

Alliance	6.00%	Falher	6.25%	Paradise Valley	2.00%
Andrew	2.00%	Forestburg	1.00%	Peace River	5.00%
Berwyn	1.75%	Fox Creek	4.50%	Rainbow Lake	7.75%
Bonnyville	6.80%	Glendon	1.50%	Rosalind	0.50%
Castor	5.00%	Grande Cache	4.60%	Smoky Lake	3.25%
Cold Lake	4.25%	Grande Prairie	7.75%	Spirit River	4.50%
Consort	3.50%	Halkirk	1.00%	St Paul	7.00%
Coronation	3.75%	Hanna	3.50%	Swan Hills	4.00%
Delia	0.50%	Heisler	0.00%	Three Hills	5.00%
Dewberry	0.00%	High Level	6.50%	Trochu	3.50%
Donalda	1.50%	Innisfree	1.50%	Two Hills	2.75%
Drumheller	9.00%	Kinuso	3.50%	Valleyview	5.25%
Elk Point	3.60%	Linden	4.00%	Vermilion	3.50%
Elnora	1.00%	Mannville	2.50%	Veteran	1.00%
Empress	2.00%	Marwayne	2.30%	Vilna	4.00%
Fairview	6.00%	MD Badlands	9.00%		

Note: Berwyn, Castor, Consort, Empress and Forestburg were removed from Table 3 and added to Table 4.

**Availability**

Applicable to facilities constructed by the Company on customer owned or leased property, as requested by the customer.

**Price**

The Facilities charge will be set out in a contract, negotiated between the customer and the Company, and will recover the revenue requirement of the applicable facilities. The revenue requirement will be calculated on a rate base of net book value and will include Return, Income Tax, Depreciation, and Operations and Maintenance costs.

**Application**

- Facility charges will normally be billed monthly. Monthly charges are subject to change as new facilities are added or currently installed facilities are retired.
- For facilities shared among more than one customer, a separate contract will be established for each customer making use of the facilities.
- Facilities constructed under Rider E are owned and maintained by the Company.

**Availability**

- This Rider B is designed to flow through a Balancing Pool Refund from the Alberta Electric System Operator (AESO).
- Applicable to all customers with the exception of customers served on Price Schedule D24, Price Schedule D34, and Price Schedule D44, at points of service, throughout the territory served by the Company for energy consumption effective January 1, 2007.
- The Company's applicable charges under the following Price Schedules will be adjusted by the amounts noted below:

Applicable Distribution Tariff Price Schedule	Charge (¢/kW.h)
	“+” = Charge “-“ = Refund
D11 Residential	-0.30
D21 Small General Service	-0.30
D22 Small General Service – Energy Only	-0.30
D25 Irrigation Pumping Service	-0.30
D26 REA Irrigation Pumping Service	-0.30
D31 Large General Service/Industrial – Distribution Connected	-0.30
T31 Large General Service/Industrial – Transmission Connected	-0.30
D32 Generator Interconnection and Standby Power	-0.30
D33 Transmission Opportunity Rate – Distribution Connected	-0.30
T33 Transmission Opportunity Rate – Transmission Connected	-0.30
D41 Small Oilfield and Pumping Power	-0.30
D51 REA Farm Service	-0.30
D52 REA Farm Service – Excluding Wires Service Provider	-0.30
D56 Farm Service	-0.30
D61 Street Lighting Service	-0.30
D63 Private Lighting Service	-0.30

**Note: Rider B does not apply to Rider A-1, Rider E, Rider G, Rider J, and Rider Q.**

**Availability**

- This Rider G is designed to true-up 2005 Rider G and dispense of new deferral balances.
- Applicable to all customers, at points of service, throughout the territory served by the Company for energy consumption effective January 1, 2007.
- The Company's applicable charges under the following Price Schedules will be adjusted by the amounts noted below:

Applicable Distribution Tariff Price Schedule	Charge (¢/kW.h)
	“+” = Charge “-“ = Refund
D11 Residential	0.000
D21 Small General Service	0.000
D22 Small General Service – Energy Only	0.000
D25 Irrigation Pumping Service	0.000
D26 REA Irrigation Pumping Service	0.000
D31 Large General Service/Industrial – Distribution Connected < 2MW	0.000
D31 Large General Service/Industrial – Distribution Connected > 2MW	0.000
T31 Large General Service/Industrial – Transmission Connected < 2MW	0.000
T31 Large General Service/Industrial – Transmission Connected > 2MW	0.000
D32 Generator Interconnection and Standby Power < 2 MW	0.000
D32 Generator Interconnection and Standby Power > 2 MW	0.000
D33 Transmission Opportunity Rate – Distribution Connected	0.000
T33 Transmission Opportunity Rate – Transmission Connected	0.000
D41 Small Oilfield and Pumping Power	0.000
D51 REA Farm Service	0.000
D52 REA Farm Service – Excluding Wires Service Provider	0.000
D56 Farm Service	0.000
D61 Street Lighting Service	0.000
D63 Private Lighting Service	0.000

**Note: Rider G does not apply to Rider A-1, Rider E, Rider J, and Rider Q.**

---

**Availability**

Applies to all electric service throughout the territory served by the Company when a charge or refund is approved by the AEUB.

**Availability**

- Rider Q is designed to true-up outstanding 2003 and 2004 Non-Energy Regulated Rate Tariff (RRT) matters.
- The Company's applicable charges under the following Price Schedules will be adjusted by the amounts noted below:

**Price**

This Rider will apply on energy consumption effective January 1, 2007.

<b>Regulated Rate</b>	<b>Applicable Distribution Tariff Price Schedule</b>	<b>Charge (¢/kW.h)</b>
		<b>“+” = Charge</b> <b>“-” = Refund</b>
E1	D11 Residential	0.000
E2	D21, D22 Small General Service	0.000
E3	D31, T31, D32 Large General Service/Industrial & Generator Interconnection	0.000
E4	D41 Small Oilfield and Pumping Power	0.000
E51	D51, D52 REA Farm Service	0.000
E56	D56 Farm Service	0.000
E6	D61, D63 Lighting Service	0.000
E7	D25, D26 Irrigation Pumping Service	0.000

**Note: Rider Q does not apply to Rider A-1, Rider E, Rider J and Rider G.**