

PRICE SCHEDULE INDEX**RESIDENTIAL SERVICE**

Standard Residential Service

Price Schedule D11

SMALL GENERAL SERVICE

Standard Small General Service

Price Schedule D21

Small General Service – Energy Only

Price Schedule D22

Small General Service - Isolated Industrial Areas - Distribution
Connected

Price Schedule D24

Irrigation Pumping Service

Price Schedule D25

REA Irrigation Pumping Service

Price Schedule D26

LARGE GENERAL SERVICE/INDUSTRIAL

Large General Service/Industrial - Distribution Connected

Price Schedule D31

Large General Service/Industrial - Transmission Connected

Price Schedule T31

Generator Interconnection and Standby Power - Distribution Connected

Price Schedule D32

Transmission Opportunity Rate - Distribution Connected

Price Schedule D33

Transmission Opportunity Rate - Transmission Connected

Price Schedule T33

Large General Service/Industrial - Isolated Industrial Areas - Distribution
Connected

Price Schedule D34

OILFIELD

Small Oilfield and Pumping Power

Price Schedule D41

Small Oilfield and Pumping Power - Isolated Industrial Areas -
Distribution Connected

Price Schedule D44

FARM SERVICE

REA Farm Service

Price Schedule D51

REA Farm Service – Excluding Wires Service Provider Functions

Price Schedule D52

Farm Service

Price Schedule D56

LIGHTING SERVICE

Street Lighting Service

Price Schedule D61

Private Lighting Service

Price Schedule D63

PRICE OPTIONS (still in effect from 2002-01-01)

Idle Service

Option F

Service for Non-Standard Transformation
and Metering Configurations

Option H

REA Distribution Price Credit

Option P



PRICING ADJUSTMENTS (RIDERS)

Municipal Assessment (2003-12-01)
Special Facilities Charge (2002-01-01)
Temporary Adjustment (2003-01-01)
Interim Adjustment (2002-01-01)

Rider A-1
Rider E
Rider G
Rider J

STANDARD RESIDENTIAL SERVICE (INTERIM)

Price Schedule D11

Effective: January 1, 2003

- For System Access Service and Distribution Access Service for all Points of Service throughout the territory served by the Company.
- For single-phase service at secondary voltage through a single meter.
- For normal use by a single and separate household.
- Not applicable to any commercial or industrial use.

Price

- The charge for service in any one billing month is the sum of the Customer Charge and Energy Charge, determined for each individual Point of Service.

	Customer Charge	Energy Charge
Transmission	-	0.93 ¢ / kW.h
Distribution	\$13.34 / month	3.69 ¢ / kW.h
Service	\$7.72 / month	-
Total Price	\$21.06 / month	4.62 ¢ / kW.h

- The minimum monthly charge is the Customer Charge.

Application

- 1) **Price Option** - the following price option may apply:
Idle Service (Option F)
- 2) **Price Adjustments** - the following price adjustments (riders) may apply:
Municipal Assessment (Rider A-1)
Temporary Adjustment (Rider G)
Interim Adjustment (Rider J)

The Company's Terms and Conditions for Distribution Access Service and Distribution Service Connections apply to all retailers and customers provided with System and/or Distribution Access Service by the Company. The Terms and Conditions are available at ATCO Electric offices during normal working hours or on the website www.atcoelectric.com.

STANDARD SMALL GENERAL SERVICE (INTERIM)

Price Schedule D21

Effective: January 1, 2003

- For System Access Service and Distribution Access Service for all Points of Service throughout the territory served by the Company, with single or three-phase electric service at secondary voltage. Not applicable for any service in excess of 500 kW.

Price

- Charges for service in any one billing month shall be the sum of the Customer Charge, Demand Charge, and Energy Charge, determined for each individual Point of Service:

	Customer Charge	Demand Charge	Energy Charge	
			For the first 200 kW.h per kW of billing demand	For energy in excess of 200 kW.h per kW of billing demand
Transmission	-	\$0.92 / kW	0.40 ¢ / kW.h	0.40¢ / kW.h
Distribution	-	\$6.53 / kW	2.64 ¢ / kW.h	-
Service	\$11.80 / month	-	-	-
TOTAL PRICE	\$11.80 / month	\$7.45 / kW	3.04 ¢ / kW.h	0.40 ¢ / kW.h

- The billing demand may be estimated or measured and will be the greater of the following:
 - the highest metered demand during the billing period;
 - 85% of the difference between the highest metered demand in the twelve month period including and ending with the billing period and 150 kW, if this is greater than zero;
 - the estimated demand;
 - the contract demand;
 - 5 kilowatts.
- The minimum monthly bill is the sum of the Service Charge and the total Demand Charge.

The Company's Terms and Conditions for Distribution Access Service and Distribution Service Connections apply to all retailers and customers provided with System and/or Distribution Access Service by the Company. The Terms and Conditions are available at ATCO Electric offices during normal working hours or on the website www.atcoelectric.com.

<p style="text-align: center;">STANDARD SMALL GENERAL SERVICE (INTERIM)</p>
--

Price Schedule D21 (Continued)

Effective: January 1, 2003

Application

- 1) **Power Factor Correction** - where a Customer's power factor is found to be less than 90%, the Company may require the Customer to install corrective equipment.

- 2) **Price Options** - the following price options may apply:
 - Idle Service (Option F)
 - Service for Non-Standard Transformation and Metering Configurations (Option H)
 - REA Distribution Price Credit (Option P)

- 3) **Price Adjustments** - the following price adjustments (riders) may apply:
 - Municipal Assessment (Rider A-1)
 - Temporary Adjustment (Rider G)
 - Interim Adjustment (Rider J)

The Company's Terms and Conditions for Distribution Access Service and Distribution Service Connections apply to all retailers and customers provided with System and/or Distribution Access Service by the Company. The Terms and Conditions are available at ATCO Electric offices during normal working hours or on the website www.atcoelectric.com.

SMALL GENERAL SERVICE – ENERGY ONLY (INTERIM)

Price Schedule D22

Effective: January 1, 2003

- For System Access Service and Distribution Access Service for all Points of Service throughout the territory served by the Company, with single or three-phase electric service at secondary voltage. Not applicable for any service in excess of 50 kW.

Price

- Charges for service in any one billing month shall be the Energy Charge, determined for each individual Point of Service:

	Energy Charge	
	For the first 50 kW.h per kW of billing demand	For energy in excess of 50 kW.h per kW of billing demand
Transmission	0.45 ¢ / kW.h	0.45 ¢ / kW.h
Distribution	19.55 ¢ / kW.h	5.86 ¢ / kW.h
Service	-	-
TOTAL PRICE	20.00 ¢ / kW.h	6.31 ¢ / kW.h

- Billing demand may be estimated or measured and will be the greater of the following:
 - the highest metered demand during the billing period;
 - the estimated demand;
 - the contract demand;
 - 5 kilowatts.
- The minimum annual charge is 12 times the sum of:
 - the Service Charge from Price Schedule 21; and
 - the Total Demand Charge from Price Schedule 21 multiplied by the higher of the DCD or 5 kW.

The Company's Terms and Conditions for Distribution Access Service and Distribution Service Connections apply to all retailers and customers provided with System and/or Distribution Access Service by the Company. The Terms and Conditions are available at ATCO Electric offices during normal working hours or on the website www.atcoelectric.com.

SMALL GENERAL SERVICE – ENERGY ONLY (INTERIM)

Price Schedule D22 (Continued)

Effective: January 1, 2003

Application

- 1) **Power Factor Correction** - where the power factor at a Point of Service is found to be less than 90%, the Company may require the installation of corrective equipment.
- 2) **Price Options** - the following price option may apply:
 - Idle Service (Option F)
 - Service for Non-Standard Transformation and Metering Configurations (Option H)
- 3) **Price Adjustments** - the following additional charges (riders) may apply:
 - Municipal Assessment (Rider A-1)
 - Temporary Adjustment (Rider G)
 - Interim Adjustment (Rider J)

The Company's Terms and Conditions for Distribution Access Service and Distribution Service Connections apply to all retailers and customers provided with System and/or Distribution Access Service by the Company. The Terms and Conditions are available at ATCO Electric offices during normal working hours or on the website www.atcoelectric.com.

SMALL GENERAL SERVICE
Isolated Industrial Areas – Distribution Connected
(INTERIM)

Price Schedule D24

Effective: January 1, 2003

- For Distribution Access Service, single or three-phase, for all Points of Service throughout the territory served by the Company from an isolated generation system. Not applicable for any service in excess of 500 kW.

Price

- Charges for service in any one billing month shall be the sum of the Customer Charge, Demand Charge, and Energy Charge, determined for each individual Point of Service:

	Customer Charge	Demand Charge	Energy Charge	
			For the first 200 kW.h per kW of billing demand	For energy in excess of 200 kW.h per kW of billing demand
Distribution	-	\$6.53 / kW	2.64 ¢ / kW.h	-
Service	\$11.80 / month			
TOTAL PRICE	\$11.80 /month	\$6.53 / kW	2.64 ¢ / kW.h	-

- The billing demand may be estimated or measured and will be the greater of the following:
 - the highest metered demand during the billing period;
 - 85% of the difference between the highest metered demand in the twelve month period including and ending with the billing period and 150 kW, if this is greater than zero;
 - the estimated demand;
 - the contract demand;
 - 5 kilowatts.
- The minimum monthly bill is the sum of the Service Charge and the total Demand Charge.

The Company's Terms and Conditions for Distribution Access Service and Distribution Service Connections apply to all retailers and customers provided with System and/or Distribution Access Service by the Company. The Terms and Conditions are available at ATCO Electric offices during normal working hours or on the website www.atcoelectric.com.

<p style="text-align: center;">SMALL GENERAL SERVICE Isolated Industrial Areas – Distribution Connected</p>

Price Schedule D24 (Continued)

Effective: January 1, 2003

Application

- 1) **Power Factor Correction** - where a Customer's power factor is found to be less than 90%, the Company may require the Customer to install corrective equipment.
- 2) **Price Options** - the following price options may apply:
 - Idle Service (Option F)
 - Service for Non-Standard Transformation and Metering Configurations (Option H)
 - REA Distribution Price Credit (Option P)
- 3) **Price Adjustments** - the following price adjustments (riders) may apply:
 - Municipal Assessment (Rider A-1)
 - Temporary Adjustment (Rider G)
 - Interim Adjustment (Rider J)

The Company's Terms and Conditions for Distribution Access Service and Distribution Service Connections apply to all retailers and customers provided with System and/or Distribution Access Service by the Company. The Terms and Conditions are available at ATCO Electric offices during normal working hours or on the website www.atcoelectric.com.

IRRIGATION PUMPING SERVICE (INTERIM)

Price Schedule D25

Effective: February 1, 2004

- For System Access Service and Distribution Access Service for all Points of Service throughout the territory served by the Company, between April 1 and October 31 for seasonal irrigation pumping loads. Not applicable for any service in excess of 150 kW.

Price

- Charges for service in any one billing month during one Season shall be the sum of the Customer Charge, Demand Charge, and Energy Charge, determined for each individual Point of Service. Previously, charges for service for one Season was the sum of the Service Charge, Demand Charge, and Energy Charge, determined for each individual Point of Service, where one Season is defined as the period from April 1 to October 31. Due to monthly billing during the Season, rates for the Customer Charge and Demand Charge are one-seventh the season charge.

	Customer Charge	Demand Charge	Energy Charge
Transmission	-	\$0.48 / kW	0.37 ¢ / kW.h
Distribution	-	\$2.11 / kW	-
Service	\$3.01 / service	-	-
TOTAL PRICE	\$3.01 / service	\$2.59 per kW of billing demand	0.37 ¢ / kW.h

- Billing demand may be estimated or measured and will be the greater of the following:
 - the highest metered demand during the billing period;
 - the estimated demand;
 - the contract demand;
 - 5 kilowatts.

For non-demand metered services, demand shall be estimated based on equipment nameplate ratings as follows:

$$\text{kW Billing Demand} = \text{kW Nameplate Rating}$$

or

$$\text{kW Billing Demand} = \text{HP Nameplate} \times 0.746$$

The Company's Terms and Conditions for Distribution Access Service and Distribution Service Connections apply to all retailers and customers provided with System and/or Distribution Access Service by the Company. The Terms and Conditions are available at ATCO Electric offices during normal working hours or on the website www.atcoelectric.com.

**IRRIGATION PUMPING SERVICE
(INTERIM)*****Price Schedule D25 (Continued)******Effective: February 1, 2004******Application***

- 1) **Billing** - the minimum charge for the month during the season shall be the Service Charge and the Demand Charge. Previously, charges for service for one Season was the sum of the Service Charge, Demand Charge, and Energy Charge, determined for each individual Point of Service, where one Season is defined as the period from April 1 to October 31. Due to monthly billing, rates for the Customer Charge and Demand Charge are one-seventh the season charge.
- 2) **Idle Service** - in the event the service remains idle for two consecutive seasons, the Company may remove its facilities, unless the Customer pays the minimum charge for the upcoming season prior to December 31, of the preceding year.
- 3) **Power Factor Correction** - where a Customer's power factor is found to be less than 90%, the Company may require the Customer to install corrective equipment.
- 4) **Price Adjustments** - the following price adjustments (riders) may apply:
 - Temporary Adjustment (Rider G)
 - Interim Adjustment (Rider J)

The Company's Terms and Conditions for Distribution Access Service and Distribution Service Connections apply to all retailers and customers provided with System and/or Distribution Access Service by the Company. The Terms and Conditions are available at ATCO Electric offices during normal working hours or on the website www.atcoelectric.com.

**REA IRRIGATION PUMPING SERVICE
 (INTERIM)**

Price Schedule D26

Effective: February 1, 2004

- For System Access Service and Distribution Access Service for all Points of Service throughout the territory served by the Company, between April 1 and October 31 for seasonal irrigation pumping loads of Rural Electrification Association Customers and individual co-operative and colony farms with their own distribution systems. Not applicable for any service in excess of 150 kW.

Price

- Charges for service in any one billing month during one Season shall be the sum of the Customer Charge, Demand Charge, and Energy Charge, determined for each individual Point of Service: Previously, charges for service for one Season was the sum of the Service Charge, Demand Charge, and Energy Charge, determined for each individual Point of Service, where one Season is defined as the period from April 1 to October 31. Due to the monthly billing during the Season, rates for the Customer Charge and Demand Charge are one-seventh the season charge.

Customers in the REA O & M Pool

	Customer Charge	Demand Charge	Energy Charge
Transmission	-	\$0.48 / kW	0.37 ¢ / kW.h
Distribution	-	\$0.78 / kW	-
Service	\$3.01 / service	-	-
TOTAL PRICE	\$3.01 / service	\$1.26 per kW of billing demand	0.37 ¢ / kW.h

Customers outside of the REA O & M Pool

	Customer Charge	Demand Charge	Energy Charge
Transmission	-	\$0.48 / kW	0.37 ¢ / kW.h
Distribution	-	-	-
Service	\$3.01 / service	-	-
TOTAL PRICE	\$3.01 / service	\$0.48 per kW of billing demand	0.37 ¢ / kW.h

The Company's Terms and Conditions for Distribution Access Service and Distribution Service Connections apply to all retailers and customers provided with System and/or Distribution Access Service by the Company. The Terms and Conditions are available at ATCO Electric offices during normal working hours or on the website www.atcoelectric.com.

REA IRRIGATION PUMPING SERVICE**Price Schedule D26 (Continued)****Effective: February 1, 2004****Price (Continued)**

- Billing demand may be estimated or measured and will be the greater of the following:
 - (a) the highest metered demand during the billing period;
 - (b) the estimated demand;
 - (c) the contract demand;
 - (d) 5 kilowatts.

For non-demand metered services, demand shall be estimated based on equipment nameplate ratings as follows:

$$\begin{aligned} \text{kW Billing Demand} &= \text{kW Nameplate Rating} \\ &\text{or} \\ \text{kW Billing Demand} &= \text{HP Nameplate} \times 0.746 \end{aligned}$$

- **REA Specific Charges:**
 - Other charges are applied on behalf of the REAs as defined in contracts and are subject to change from time to time.
 - These charges include operation and maintenance charges and deposit reserve charges, and are in addition to the charges contained in this price schedule.
- REA The minimum charge for the season shall be 7 times the Service Charge and 7 times the Demand Charge

Application

- 1) **Billing** - the minimum charge for the month during the season shall be the Service Charge and the Demand Charge. Previously, charges for service for one Season was the sum of the Service Charge, Demand Charge, and Energy Charge, determined for each individual Point of Service, where one Season is defined as the period from April 1 to October 31. Due to monthly billing, rates for the Customer Charge and Demand Charge are one-seventh the season charge.
- 2) **Idle Service** - in the event the service remains idle for two consecutive seasons, the Company may remove its facilities, unless the Customer pays the minimum charge for the upcoming season prior to December 31, of the preceding year.
- 3) **Power Factor Correction** - where a Customer's power factor is found to be less than 90%, the Company may require the Customer to install corrective equipment.
- 4) **Price Adjustments** - the following price adjustments (riders) may apply:
 - Temporary Adjustment (Rider G)

The Company's Terms and Conditions for Distribution Access Service and Distribution Service Connections apply to all retailers and customers provided with System and/or Distribution Access Service by the Company. The Terms and Conditions are available at ATCO Electric offices during normal working hours or on the website www.atcoelectric.com.



Electric Service Tariff
Sheet 3 of 2
Effective: 2004 02 01
Supersedes: 2003 01 01

Interim Adjustment (Rider J)

The Company's Terms and Conditions for Distribution Access Service and Distribution Service Connections apply to all retailers and customers provided with System and/or Distribution Access Service by the Company. The Terms and Conditions are available at ATCO Electric offices during normal working hours or on the website www.atcoelectric.com.

LARGE GENERAL SERVICE / INDUSTRIAL Distribution-Connected (INTERIM)

Price Schedule D31

Effective: January 1, 2003

- For System Access Service and Distribution Access Service, single or three-phase, for all Points of Service throughout the territory served by the Company from the Alberta Interconnected System.
- For connected loads greater than 500 kW, the Point of Service must be equipped with interval data metering.

Price

- Charges for service in any one billing month shall be the sum of the Customer Charge, Demand Charge, Energy Charge and Charge for Deficient Power Factor, determined for each individual Point of Service:

	Customer Charge	Demand Charge		Energy Charge
		For the first 500 kW of billing demand	For all billing demand over 500 kW	All kW.h
Transmission	-	\$1.33 / kW	\$1.33 / kW	0.38 ¢ / kW.h
Distribution	-	\$4.78 / kW	\$1.44 / kW	-
Service	\$11.80 / month	-	\$0.65 / kW	-
TOTAL PRICE	\$11.80 / month	\$6.11 / kW	\$3.42 / kW	0.38 ¢ / kW.h

- **Billing demand** for the Distribution and Service charges shall be the higher of:
 - (a) The highest metered demand during the billing period (including any demand delivered and billed under Price Schedules D32 and D33);
 - (b) 85% of the highest metered demand (including any demand delivered and billed under Price Schedules D32 and D33) in the 12-month period including and ending with the billing period;
 - (c) the estimated demand;
 - (d) the Distribution Contract Demand (DCD);
 - (e) 50 kilowatts.

The Company's Terms and Conditions for Distribution Access Service and Distribution Service Connections apply to all retailers and customers provided with System and/or Distribution Access Service by the Company. The Terms and Conditions are available at ATCO Electric offices during normal working hours or on the website www.atcoelectric.com.

**LARGE GENERAL SERVICE / INDUSTRIAL
Distribution Connected (INTERIM)**

Price Schedule D31 (Continued)

Effective: January 1, 2003

Price (Continued)

- **Billing demand** for the Transmission charges shall be the higher of:
 - (a) The highest metered demand during the billing period (excluding any demand delivered and billed under Price Schedules D32 and D33);
 - (b) 85% of the highest metered demand (excluding any demand delivered and billed under Price Schedules D32 and D33) in the 12-month period including and ending with the billing period;
 - (c) the estimated demand;
 - (d) the Transmission Contract Demand (TCD);
 - (e) if any of the above are equal to or greater than 1000 kW, 80% of the highest metered demand (excluding any demand delivered and billed under Price Schedules D32 and D33) in the period which is the shorter of:
 - i. the 36-month period including and ending with the current billing period; or
 - ii. the period commencing with the first billing period in the year 2000, and ending with the current billing period.
 - (f) 50 kilowatts.
- If energy is also taken under Transmission Opportunity Rate (Price Schedule D33), during the billing period, the billing demand will be the Price Schedule D31 **Base Demand** as specified under the corresponding agreement.
- **Non-Demand Metered Services** will be estimated based on equipment nameplate ratings as follows:

kW Billing Demand	=	kW Nameplate Rating
	=	or
kW Billing Demand	=	HP Nameplate x 0.746
- **Charge for Deficient Power Factor** - For customer power factor which is less than 90%, an additional charge for deficient power factor of \$9.00/kV.A will be applied to the difference between the highest metered kV.A demand and 111% of the highest metered kW demand in the same billing period.

The Company's Terms and Conditions for Distribution Access Service and Distribution Service Connections apply to all retailers and customers provided with System and/or Distribution Access Service by the Company. The Terms and Conditions are available at ATCO Electric offices during normal working hours or on the website www.atcoelectric.com.

**LARGE GENERAL SERVICE / INDUSTRIAL
Distribution Connected (INTERIM)**

Price Schedule D31 (Continued)

Effective: January 1, 2003

Price (Continued)

Application

- 1) **Price Options** - the following price options may apply:
 - Idle Service (Option F)
 - Service for Non-Standard Transformation and Metering Configurations (Option H)
 - REA Distribution Price Credit (Option P)

- 2) **Price Adjustments** - the following price adjustments (riders) may apply:
 - Municipal Assessment (Rider A-1)
 - Special Facilities Charge (Rider E)
 - Temporary Adjustment (Rider G)
 - Interim Adjustment (Rider J)

The Company's Terms and Conditions for Distribution Access Service and Distribution Service Connections apply to all retailers and customers provided with System and/or Distribution Access Service by the Company. The Terms and Conditions are available at ATCO Electric offices during normal working hours or on the website www.atcoelectric.com.

LARGE GENERAL SERVICE / INDUSTRIAL Transmission-Connected (INTERIM)

Price Schedule T31

Effective: January 1, 2003

- For System Access Service, single or three-phase, for all Points of Service throughout the territory served by the Company from the Alberta Interconnected System, that are directly connected to a transmission substation, and do not make any use of distribution facilities owned by ATCO Electric.
- The Point of Service must be equipped with interval data metering.

Price

- Charges for service in any one billing month shall be the sum of the Demand Charge, Energy Charge and charge for deficient power factor, determined for each individual Point of Service:

	Demand Charge		Energy Charge
	For the first 500 kW of billing demand	For all billing demand over 500 kW	All kW.h
Transmission	\$1.41 / kW (2001 TA DTS Rate Schedule less under frequency load shedding credit)	\$1.41 / kW (2001 TA DTS Rate Schedule less under frequency load shedding credit)	Charges per 2001 TA DTS Rate Schedule
Distribution	\$0.07 / kW	-	-
Service	\$4.10 / kW	-	-
TOTAL PRICE	\$5.58 / kW	\$1.41 / kW	

- **Billing demand** for the Distribution and Service charges shall be the higher of:
 - (a) The highest metered demand during the billing period (including any contract opportunity demand delivered and billed under Price Schedule T33)
 - (b) 85% of the highest metered demand (including any contract opportunity demand delivered and billed under Price Schedule T33) in the 12-month period including and ending with the billing period;
 - (c) the estimated demand;
 - (d) 50 kilowatts.

The Company's Terms and Conditions for Distribution Access Service and Distribution Service Connections apply to all retailers and customers provided with System and/or Distribution Access Service by the Company. The Terms and Conditions are available at ATCO Electric offices during normal working hours or on the website www.atcoelectric.com.

LARGE GENERAL SERVICE / INDUSTRIAL Transmission Connected (INTERIM)

Price Schedule T31 (Continued)

Effective: January 1, 2003

Price (Continued)

- **Billing demand** for the transmission charge shall be the higher of:
 - (a) The billing demand charged to ATCO Electric by the Transmission Administrator at a Point of Delivery, that is attributable to the customer at that Point of Delivery;
 - (b) The highest metered demand during the billing period.
 - (c) 90% of the highest metered demand in the 12-month period including and ending with the billing period;
 - (d) 85% of the highest metered demand in the 24-month period including and ending with the billing period;
 - (e) 80% of the highest metered demand in the 36-month period including and ending with the billing period;
 - (f) 75% of the highest metered demand in the 48-month period including and ending with the billing period;
 - (g) 70% of the highest metered in the 60-month period including and ending with the billing period;
where (a) through (g) exclude any contracted Opportunity Demand delivered and billed under Price Schedule T33.
 - (h) the estimated demand;
 - (i) the Transmission Contract Demand (TCD)
 - (j) 50 kilowatts
- **The 'highest metered demand'** is defined for the purposes of this price schedule, according to the 2001 TA DTS Rate Schedule.
- If energy is also taken under Transmission Opportunity Rate (Price Schedule T33), during the billing period, the billing demand will be the Price Schedule T31 **Base Demand** as specified under the corresponding agreement.
- **Charge for Deficient Power Factor** – Power Factor Charges according to the 2001 TA DTS Rate Schedule will apply.

The Company's Terms and Conditions for Distribution Access Service and Distribution Service Connections apply to all retailers and customers provided with System and/or Distribution Access Service by the Company. The Terms and Conditions are available at ATCO Electric offices during normal working hours or on the website www.atcoelectric.com.

<p style="text-align: center;">LARGE GENERAL SERVICE / INDUSTRIAL Transmission Connected (INTERIM)</p>

Price Schedule T31 (Continued)

Effective: January 1, 2003

Price (Continued)

Application

- 1) **Price Options** - the following price option may apply:
Service for Non-Standard Transformation and Metering Configurations (Option H)

- 2) **Price Adjustments** - the following price adjustments (riders) may apply:
Municipal Assessment (Rider A-1)
Special Facilities Charge (Rider E)
Temporary Adjustment (Rider G)
Interim Adjustment (Rider J)

The Company's Terms and Conditions for Distribution Access Service and Distribution Service Connections apply to all retailers and customers provided with System and/or Distribution Access Service by the Company. The Terms and Conditions are available at ATCO Electric offices during normal working hours or on the website www.atcoelectric.com.

**GENERATOR INTERCONNECTION AND STANDBY POWER
 Distribution-Connected (INTERIM)**

Price Schedule D32

Effective: January 1, 2003

- For Points of Service served by the Company from the Alberta Interconnected System, with on-site generating equipment connected to the distribution system, which may be used to supply load at the same site.
- To provide standby power to the on-site load in the event of a forced outage or derate of on-site generating equipment, to provide power for generator startup, and to provide supplemental power if the on-site demand requirements exceed the generator capacity.
- To provide credits to Generators for reduced DTS charges from the Transmission Administrator.
- To charge Generators if the Point of Delivery attracts STS charges from the Transmission Administrator.
- For interconnection of the generator to the distribution system.
- The Point of Service must be equipped with 4-quadrant interval data metering, for both supply and demand, the cost of which will be in addition to the charges under this rate.

Price

- Charges for service in any one billing month shall be the sum of the Customer Charges, Demand Charges, Energy Charges, Other Charges, Charge for Deficient Power Factor (determined for each individual Point of Service), and Fixed Charges defined below:

	Customer Charge	Demand Charge		Energy Charge
		For the first 500 kW of billing demand	For all billing demand over 500 kW	All kW.h
Transmission	-	\$1.33 / kW	\$1.33 / kW	0.38 ¢ / kW.h
Distribution	-	\$4.78 / kW	\$1.44 / kW	-
Service	\$11.80 / month	\$0.00 / kW	\$0.65 / kW	-
TOTAL PRICE	\$11.80 / month	\$6.11 / kW	\$3.42 / kW	0.38 ¢ / kW.h

The Company's Terms and Conditions for Distribution Access Service and Distribution Service Connections apply to all retailers and customers provided with System and/or Distribution Access Service by the Company. The Terms and Conditions are available at ATCO Electric offices during normal working hours or on the website www.atcoelectric.com.

GENERATOR INTERCONNECTION AND STANDBY POWER Distribution-Connected (INTERIM)

Price Schedule D32 (Continued)

Effective: January 1, 2003

Price (Continued)

- **Billing demand** for the Distribution and Service charges shall be the higher of:
 - (a) The highest metered demand during the billing period (including any demand delivered and billed under Price Schedule D33);
 - (b) 85% of the highest metered demand (including any demand delivered and billed under Price Schedule D33) in the 12-month period including and ending with the billing period;
 - (c) the estimated demand;
 - (d) the Distribution Contract Demand (DCD);

- **Billing demand** for the Transmission charges shall be the higher of:
 - (a) The highest metered demand during the billing period (excluding any demand delivered and billed under Price Schedule D33);
 - (b) 85% of the highest metered demand (excluding any demand delivered and billed under Price Schedule D33) in the 12-month period including and ending with the billing period;
 - (c) the estimated demand;
 - (d) the Transmission Contract Demand (TCD);
 - (e) if any of the above are equal to or greater than 1000 kW, 80% of the highest metered demand (excluding any demand delivered and billed under Price Schedules D33) in the period which is the shorter of:
 - i. the 36-month period including and ending with the current billing period; or
 - ii. the period commencing with the first billing period in the year 2000, and ending with the current billing period.

The Company's Terms and Conditions for Distribution Access Service and Distribution Service Connections apply to all retailers and customers provided with System and/or Distribution Access Service by the Company. The Terms and Conditions are available at ATCO Electric offices during normal working hours or on the website www.atcoelectric.com.

GENERATOR INTERCONNECTION AND STANDBY POWER Distribution-Connected (INTERIM)

Price Schedule D32 (Continued)

Effective: January 1, 2003

Price (Continued)

- If energy is also taken under Transmission Opportunity Rate (Price Schedule D33), during the billing period, the billing demand will be the Price Schedule D32 **Base Demand** as specified under the corresponding agreement.
- **Non-Demand Metered Services** will be estimated based on equipment nameplate ratings as follows:

kW Billing Demand	=	kW Nameplate Rating
	or	
kW Billing Demand	=	HP Nameplate x 0.746
- **Charge for Deficient Power Factor** - For customer power factor which is less than 90%, an additional charge for deficient power factor of \$9.00/kV.A will be applied to the difference between the highest metered kV.A demand and 111% of the highest metered kW demand in the same billing period.

Other Charges:

- If the Company incurs an increase to the Point-of-Delivery (POD) billing demand with the Transmission Administrator as a result of a standby event of the customer (i.e. the new demand at the POD is coincident with an outage of the generator), then an additional charge may apply, equal to the Transmission Demand Charge for Price Schedule T31, multiplied by the incremental POD demand incurred. This charge will apply for the current billing period, and for the next 11 billing periods.

Capital Recovery Charges:

- The cost of the Incremental Interconnection Facilities will be determined as set out in Section 9.6 of the Terms and Conditions for Distribution Service Connections. The total amount will be collected from the customer in accordance with Section 9.8 of the Terms and Conditions for Distribution Service Connections. A contract will be arranged between the customer and the Company, specifying the contract term and the monthly amount, which will be calculated using the Company's Rate of Return, Income Tax and Depreciation in effect at the commencement of the contract term.
- The Generating customer will be required to pay all replacement costs for incremental facilities as per Section 9.6 of the Terms and Conditions for Distribution Service Connections.

The Company's Terms and Conditions for Distribution Access Service and Distribution Service Connections apply to all retailers and customers provided with System and/or Distribution Access Service by the Company. The Terms and Conditions are available at ATCO Electric offices during normal working hours or on the website www.atcoelectric.com.

GENERATOR INTERCONNECTION AND STANDBY POWER Distribution-Connected (INTERIM)

Price Schedule D32 (Continued)

Effective: January 1, 2003

Price (Continued)

Incremental Operations and Maintenance Charges:

- The minimum monthly incremental Operations and Maintenance charge will be:

$$\frac{3.76\% \times \text{Incremental Interconnection Cost}}{12}$$

- The Generating customer will be required to pay for switching or isolation as per Section 9.6 of the Terms and Conditions.

Incremental Administration and General Charges:

- The minimum monthly incremental Administration and General charge will be:

$$\frac{4.76\% \times \text{Incremental Interconnection Cost}}{12}$$

Generator Credits for reduction in Billing Determinants at the Point of Delivery:

$$\text{Credit} = \text{DTS} * (\text{A} - \text{B})$$

Where:

A = Monthly Gross Billing Determinants at the POD to which the generator is connected (which will be determined by adding the interval output data metered at the generator to the net interval data metered at the POD).

B = Monthly Net Billing determinants at the POD to which the generator is connected.

DTS = The charges as per the TA's effective DTS tariff.

Generator Charges for a Point of Delivery:

$$\text{Charge} = \text{STS} * \text{A}$$

Where:

A = Monthly **Net** Supply Billing determinants at the POS to which the generator is connected.

STS = The charges as per the TA's effective STS tariff.

The Company's Terms and Conditions for Distribution Access Service and Distribution Service Connections apply to all retailers and customers provided with System and/or Distribution Access Service by the Company. The Terms and Conditions are available at ATCO Electric offices during normal working hours or on the website www.atcoelectric.com.

GENERATOR INTERCONNECTION AND STANDBY POWER Distribution-Connected (INTERIM)

Price Schedule D32 (Continued)

Effective: January 1, 2003

Application

- 1) **Price Options** - the following price options may apply:
 - Idle Service (Option F)
 - Service for Non-Standard Transformation and Metering Configurations (Option H)

- 2) **Price Adjustments** - the following price adjustments (riders) may apply:
 - Municipal Assessment (Rider A-1)
 - Temporary Adjustment (Rider G)
 - Interim Adjustment (Rider J)

TRANSMISSION OPPORTUNITY RATE

Distribution-Connected (INTERIM)

Price Schedule D33

Effective: January 1, 2003

- Available only to Points of Service which are eligible as determined by the Transmission Administrator for Demand Opportunity Service, throughout the territory served by the Company from the Alberta Interconnected System for loads greater than 1,000 kW.
- Available only when the Transmission Administrator determines that there is sufficient transmission capacity. Service on this rate is interruptible for transmission system security reasons at the Transmission Administrator's request.
- The Point of Service must be equipped with revenue approved time of use metering. The cost of the time of use metering is in addition to the charges in this rate.
- Telemetry is required for all points of service on this rate with demands greater than 2,500 kW, and any associated costs will be in addition to the charges in this rate.

Price

- Charges for service in any one billing month shall be the sum of the following charges determined for each individual Point of Service. The 2001 TA DOS charges will be applied according to the terms of the DOS option selected by the Customer:

	Customer Charges	Demand Charges	Demand Charges	Energy Charges	Energy Charges
		For all kW of Opportunity Contract Demand	For the peak kW above the Opportunity Contract Demand	For all kW.h metered above the Base Demand, not exceeding the Opportunity Contract Demand	For all kW.h metered above the Opportunity Contract Demand
Transmission	Transaction Charge per 2001 TA DOS Rate Schedule	-	Per Price Schedule D32	Per 2001 TA Dos Rate Schedule	Per Price Schedule D32
Distribution	-	\$4.78 / kW	\$1.44 / kW	-	-
Service	\$11.80 / month	\$0.00 / kW	\$0.66 / kW	-	-
Total Price	\$511.80/month	\$4.78 / kW			

The Company's Terms and Conditions for Distribution Access Service and Distribution Service Connections apply to all retailers and customers provided with System and/or Distribution Access Service by the Company. The Terms and Conditions are available at ATCO Electric offices during normal working hours or on the website www.atcoelectric.com.

TRANSMISSION OPPORTUNITY RATE Distribution-Connected (INTERIM)

Price Schedule D33 (Continued)

Effective: January 1, 2003

Price (Continued)

- The attached form must be completed and submitted to the Company, and serves as an Opportunity Contract which specifies the period and the Opportunity Demand requested by the Customer, as well as the DOS option selected.
- The charges according to the 2001 TA DOS Rate Schedule will be the approved charges in effect during the billing period, and will be revised in accordance with the TA's charges as required.

Application

1. **Base Demand** - A Customer qualifying for this rate must establish a Base Demand with the Company on Price Schedule D31 prior to receiving service under this rate (which will be submitted as part of the attached form).
 - a) For existing Customers, the Price Schedule D31 Base Demand will normally be the maximum billing demand in the 12 most recent billing periods.
 - b) New Customers qualifying for this rate may select the Large General Service/Industrial D31 Base Demand based on forecast loads and economics, provided the Company agrees that the conditions of applicability are satisfied.
 - c) Once established, the Price Schedule D31 Base Demand remains fixed for the purposes of billing all future service on this rate.
2. **Applicable Charges** – This rate schedule applies in conjunction with rate D31, in that the first block demand charges apply only to the first 500 kW of the combined demand (i.e. D31 and D33, and D32 should there be an excursion above contracted opportunity demand), and the remainder of the combined demand is subject to the second block demand charges. The Service Customer Charge does not apply again as it has already been applied to the base load on Price Schedule D31.
3. **Options** - A Customer requesting service under this rate must select the provisions of one of the TA's 2001 DOS Rate Schedules. The Customer is subject to the Transmission Administrators minimum Opportunity Service charges, attributable to that customer.
4. **Notice Period** - A Customer requesting service under this rate is required to provide notification as prescribed in the TA tariff in relation to DOS service.

The Company's Terms and Conditions for Distribution Access Service and Distribution Service Connections apply to all retailers and customers provided with System and/or Distribution Access Service by the Company. The Terms and Conditions are available at ATCO Electric offices during normal working hours or on the website www.atcoelectric.com.

TRANSMISSION OPPORTUNITY RATE Distribution-Connected (INTERIM)

Price Schedule D33 (Continued)

Effective: January 1, 2003

Price (Continued)

5. **Load Curtailment** - When a load curtailment directive is given, the load at the point of service must not exceed the Price Schedule D31 Base Demand until the Company gives notification that the interruption period is over, at which time consumption of energy may be resumed
6. **Non-Compliance Charges** – In the event of a load curtailment directive, if the load served under this rate is not curtailed for the entire interruption period, any charges incurred by the Company will be charged to the Point of Service on this rate.
7. **Price Adjustments** - the following price adjustments may apply:
 - Municipal Assessment (Rider A-1)
 - Temporary Adjustment (Rider G)
 - Interim Adjustment (Rider J)
 - Option H

The Company's Terms and Conditions for Distribution Access Service and Distribution Service Connections apply to all retailers and customers provided with System and/or Distribution Access Service by the Company. The Terms and Conditions are available at ATCO Electric offices during normal working hours or on the website www.atcoelectric.com.

TRANSMISSION OPPORTUNITY SERVICE CONTRACT
Price Schedule D33 (INTERIM)

This form will be completed and signed by ATCO Electric after a telephone request from a Customer for Transmission Opportunity Service. The form will be faxed to the Customer upon which the Customer will confirm the information with a signature and fax the completed form back to ATCO Electric Control Centre – (780) 632-5959.

Customer Name:	<input style="width: 100%;" type="text"/>			
Date of Request:	<input style="width: 100%;" type="text"/>			
Time of Request:	<input style="width: 100%;" type="text"/>			
1. OPPORTUNITY CONTRACT PERIOD:	Start Date:	<input style="width: 100px; height: 20px;" type="text"/>	Start Time:	<input style="width: 100px; height: 20px;" type="text"/>
	End Date:	<input style="width: 100px; height: 20px;" type="text"/>	End Time:	<input style="width: 100px; height: 20px;" type="text"/>
	Number of Hours in Contract Period:		<input style="width: 100px; height: 20px;" type="text"/>	Hours
2. TRANSMISSION OPPORTUNITY SERVICE OPTION:	TA "DEMAND OPPORTUNITY SERVICE": DOS 7 Minutes: <input style="width: 40px; height: 20px;" type="text"/>			
			DOS 1 Hour: <input style="width: 40px; height: 20px;" type="text"/>	
			DOS Term: <input style="width: 40px; height: 20px;" type="text"/>	
3. OPPORTUNITY CONTRACT DEMAND:	<input style="width: 100px; height: 20px;" type="text"/>	kW		
4. BASE DEMAND:	Large General Service/Industrial Price Schedule D31 Base Demand: <input style="width: 100px; height: 20px;" type="text"/> kW			
	Sum of Demands on all Opportunity Service Contracts:			<input style="width: 100px; height: 20px;" type="text"/> kW
	Total Base Demand:			<input style="width: 100px; height: 20px;" type="text"/> kW

Confirmation: 1) _____ for ATCO Electric
 2) _____ for _____

The Company's Terms and Conditions for Distribution Access Service and Distribution Service Connections apply to all retailers and customers provided with System and/or Distribution Access Service by the Company. The Terms and Conditions are available at ATCO Electric offices during normal working hours or on the website www.atcoelectric.com.

TRANSMISSION OPPORTUNITY RATE

Transmission – Connected (INTERIM)

Price Schedule T33

Effective: January 1, 2003

- For System Access Service, single or three-phase, for all Points of Service throughout the territory served by the Company from the Alberta Interconnected System, that are directly connected to a transmission substation, and do not make any use of distribution facilities owned by ATCO Electric.
- Available only to Points of Service which are eligible as determined by the Transmission Administrator for Demand Opportunity Service, throughout the territory served by the Company from the Alberta Interconnected System for loads greater than 1,000 kW.
- Available only when the Transmission Administrator determines that there is sufficient transmission capacity. Service on this rate is interruptible for transmission system security reasons at the Transmission Administrator's request.
- The point of service must be equipped with revenue approved time of use metering. The cost of the time of use metering is in addition to the charges in this rate.
- Telemetry is required for all points of service on this rate with demands greater than 2,500 kW, and any associated costs will be in addition to the charges in this rate.

Price

- Charges for service in any one billing month shall be the sum of the following charges determined for each individual Point of Service. The 2001 TA DOS charges will be those according to the terms of the DOS option selected by the Customer:

	Transaction Charge	Demand Charges	Demand Charges	Energy Charges	Energy Charges
		For all kW of Opportunity Contract Demand	For the peak kW above the Opportunity Contract Demand	For all kW.h metered above the Base Demand, not exceeding the Opportunity Contract Demand	For all kW.h metered above the Opportunity Contract Demand
Transmission	Per 2001 TA Dos Rate Schedule	-	Per Price Schedule T31	Per 2001 TA Dos Rate Schedule	Per Price Schedule T31
Distribution	-	Per Price Schedule T31	Per Price Schedule T31	-	-
Service	-	Per Price Schedule T31	Per Price Schedule T31	-	-

The Company's Terms and Conditions for Distribution Access Service and Distribution Service Connections apply to all retailers and Customers provided with System and/or Distribution Access Service by the Company. The Terms and Conditions are available at ATCO Electric offices during normal working hours or on the website www.atcoelectric.com.

TRANSMISSION OPPORTUNITY RATE Transmission – Connected (INTERIM)

Price Schedule T33 (Continued)

Effective: January 1, 2003

Price (Continued)

- The attached form must be completed and submitted to the Company, and serves as an Opportunity Contract which specifies the period and the Opportunity Demand requested by the Customer, as well as the DOS option selected.
- The charges according to the 2001 TA DOS Rate Schedule will be the approved charges in effect during the billing period, and will be revised in accordance with the TA's charges as required.

Application

1. **Base Demand** - A Customer qualifying for this rate must establish a Base Demand with the Company on Price Schedule T31 prior to receiving service under this rate.
 - (a) For existing Customers, the Price Schedule T31 Base Demand will normally be the maximum billing demand in the 12 most recent billing periods.
 - (b) New Customers qualifying for this rate may select the Large General Service/Industrial T31 Base Demand based on forecast loads and economics, provided the Company agrees that the conditions of applicability are satisfied.
 - (c) Once established, the Price Schedule T31 Base Demand remains fixed for the purposes of billing all future service on this rate.
2. **Applicable Charges** - This rate schedule applies in conjunction with rate T31, in that the first block demand charges apply only to the first 500 kW of the combined demand (i.e. T31 and T33, and T31 again should there be an excursion above contracted opportunity demand), and the remainder of the combined demand is subject to the second block demand charges.
3. **Options** - A Customer requesting service under this rate must select the provisions of one of the TA's DOS Rate Schedules. The Customer is subject to the Transmission Administrators minimum Opportunity Service charges, attributable to that customer.
4. **Notice Period** - A Customer requesting service under this rate is required to provide notification as prescribed in the TA tariff in relation to DOS service.

<p style="text-align: center;">TRANSMISSION OPPORTUNITY RATE Transmission – Connected (INTERIM)</p>

Price Schedule T33 (Continued)

Effective: January 1, 2003

Price (Continued)

5. **Load Curtailment** - When a load curtailment directive is given, the load at the point of service must not exceed the Price Schedule T31 Base Demand until the Company gives notification that the interruption period is over, at which time consumption of energy may be resumed.
6. **Non-Compliance Charges** – In the event of a load curtailment directive, if the load served under this rate is not curtailed for the entire interruption period, any charges incurred by the Company will be charged to the Point of Service on this rate.
6. **Price Adjustments** - the following price adjustments may apply:
 - Municipal Assessment (Rider A-1);
 - Temporary Adjustment (Rider G);
 - Interim Adjustment (Rider J)
 - Option H(d).

TRANSMISSION OPPORTUNITY SERVICE CONTRACT
Price Schedule T33 (INTERIM)

This form will be completed and signed by ATCO Electric after a telephone request from a Customer for Transmission Opportunity Service. The form will be faxed to the Customer upon which the Customer will confirm the information with a signature and fax the completed form back to ATCO Electric Control Centre – (780) 632-5959.

Customer Name:	<input style="width: 100%;" type="text"/>			
Date of Request:	<input style="width: 100%;" type="text"/>			
Time of Request:	<input style="width: 100%;" type="text"/>			
1. OPPORTUNITY CONTRACT PERIOD	Start Date:	<input style="width: 100px; height: 20px;" type="text"/>	Start Time:	<input style="width: 100px; height: 20px;" type="text"/>
	End Date:	<input style="width: 100px; height: 20px;" type="text"/>	End Time:	<input style="width: 100px; height: 20px;" type="text"/>
	Number of Hours in Contract Period:	<input style="width: 100px; height: 20px;" type="text"/>		Hours
2. TRANSMISSION OPPORTUNITY SERVICE OPTION:	TA "DEMAND OPPORTUNITY SERVICE":			
	DOS 7 Minutes:	<input style="width: 50px; height: 20px;" type="text"/>		
	DOS 1 Hour:	<input style="width: 50px; height: 20px;" type="text"/>		
	DOS Term:	<input style="width: 50px; height: 20px;" type="text"/>		
3. OPPORTUNITY CONTRACT DEMAND:	<input style="width: 100px; height: 20px;" type="text"/>	kW		
4. BASE DEMAND:	Large General Service/Industrial Price Schedule D31 Base Demand:			
	<input style="width: 100px; height: 20px;" type="text"/>	kW		
	Sum of Demands on all Opportunity Service Contracts:	<input style="width: 100px; height: 20px;" type="text"/>	kW	
	Total Base Demand:	<input style="width: 100px; height: 20px;" type="text"/>	kW	

Confirmation: 1) _____ for ATCO Electric
 2) _____ for _____

The Company's Terms and Conditions for Distribution Access Service and Distribution Service Connections apply to all retailers and Customers provided with System and/or Distribution Access Service by the Company. The Terms and Conditions are available at ATCO Electric offices during normal working hours or on the website www.atcoelectric.com.

**LARGE GENERAL SERVICE / INDUSTRIAL
 Isolated Industrial Areas - Distribution Connected (INTERIM)**

Price Schedule D34

Effective: January 1, 2003

- For Distribution Access Service, single or three-phase, for all Points of Service throughout the territory served by the Company from an isolated generation system.

Price

- Charges for service in any one billing month shall be the sum of the Customer Charge, Demand Charge, and Charge for Deficient Power Factor, determined for each individual Point of Service:

	Customer Charge	Demand Charge	
		For the first 500 kW of billing demand	For all billing demand over 500 kW
Distribution		\$4.78 / kW	\$1.44 / kW
Service	\$11.80 / month	-	\$0.65 / kW
TOTAL PRICE	\$11.80 / month	\$4.78 / kW	\$2.09 / kW

- Billing demand** for the Distribution and Service charges shall be the higher of:
 - The highest metered demand during the billing period;
 - 85% of the highest metered demand during the 12-month period including and ending with the billing period;
 - the estimated demand;
 - the Distribution Contract Demand (DCD);
 - 50 kilowatts.

The Company's Terms and Conditions for Distribution Access Service and Distribution Service Connections apply to all retailers and customers provided with System and/or Distribution Access Service by the Company. The Terms and Conditions are available at ATCO Electric offices during normal working hours or on the website www.atcoelectric.com.

**LARGE GENERAL SERVICE / INDUSTRIAL
Isolated Generation-Distribution Connected****Price Schedule D34 (Continued)****Effective: January 1, 2003****Price (Continued)**

- **Non-Demand Metered Services** will be estimated based on equipment nameplate ratings as follows:

$$\begin{array}{lcl} \text{kW Billing Demand} & = & \text{kW Nameplate Rating} \\ & \text{or} & \\ \text{kW Billing Demand} & = & \text{HP Nameplate} \times 0.746 \end{array}$$

- **Charge for Deficient Power Factor** - For customer power factor which is less than 90%, an additional charge for deficient power factor of \$9.00/kV.A will be applied to the difference between the highest metered kV.A demand and 111% of the highest metered kW demand in the same billing period.

Application

- 1) **Price Options** - the following price options may apply:
 - Idle Service (Option F)
 - Service for Non-Standard Transformation and Metering Configurations (Option H)
 - REA Distribution Price Credit (Option P)
- 2) **Price Adjustments** - the following price adjustments (riders) may apply:
 - Municipal Assessment (Rider A-1)
 - Special Facilities Charge (Rider E)
 - Temporary Adjustment (Rider G)
 - Interim Adjustment (Rider J)

**SMALL OILFIELD AND PUMPING POWER
 (INTERIM)**

Price Schedule D41

Effective: January 1, 2003

- For System Access Service and Distribution Access Service, single or three-phase, for all Points of Service throughout the territory served by the Company from the Alberta Interconnected System, for production energy requirements in the petroleum and natural gas industries including related operations, such as rectifiers, cathodic protection and radio transmitters.

Price

- Charges for service in any one billing month shall be the sum of the Customer Charges, Demand Charges, Energy Charges and charge for deficient power factor, determined for each individual Point of Service:

	Customer Charge	Demand Charge	Energy Charge
		For the all kW of billing demand	All kW.h
Transmission	-	\$0.76 / kW	0.39 ¢ / kW.h
Distribution	-	\$9.96 / kW	-
Service	\$11.90 / month	-	-
TOTAL PRICE	\$11.90 / month	\$10.72 / kW	0.39 ¢ / kW.h

- Billing demand** shall be the higher of:
 - The highest metered demand during the billing period;
 - 85% of the highest metered demand during the 12-month period including and ending with the billing period;
 - the estimated demand;
 - the Distribution Contract Demand (DCD);
 - 4 kilowatts.

The Company's Terms and Conditions for Distribution Access Service and Distribution Service Connections apply to all retailers and Customers provided with System and/or Distribution Access Service by the Company. The Terms and Conditions are available at ATCO Electric offices during normal working hours or on the website www.atcoelectric.com.

**SMALL OILFIELD AND PUMPING POWER
(INTERIM)****Price Schedule D41 (Continued)****Effective: January 1, 2003****Price (Continued)**

- **Non-demand Metered Services** - For non-demand metered services, demand shall be estimated based on equipment nameplate ratings as follows:

$$\text{kW Billing Demand} = \text{kW Nameplate Rating}$$

or

$$\text{kW Billing Demand} = \text{HP Nameplate} \times 0.746$$

- The 85% ratchet applies only to demand metered loads. The cost of converting an energy meter to a demand meter will be in addition to the charges on this rate.
- **Estimated Demands** - Where it is impractical to meter a point of service, the Company may bill on the basis of estimated maximum demands. In such case, the monthly bill shall be the demand charge above applied to the estimated demand, plus a flat rate of \$1.47 per kW in lieu of the charge for energy.
- The **Metered demand** will be the greater of the registered demand in kW, or 90% of the registered demand in kV.A where a kW reading is not available.
- **Charge for Deficient Power Factor** - where a Customer's power factor is found to be less than 90%, the Company may require such Customers to install corrective equipment. For Customer power factor which is less than 90%, an additional charge for deficient power factor of \$9/kV.A will be applied to the difference between the highest metered kV.A demand and 111% of the highest metered kW demand in the same billing period.

Application

1. **Demand Metered** - where services are demand metered, the meter will normally be read and reset at least once every two months.
2. **Price Options** - the following price options may apply:
Idle Service (Option F)
3. **Price Adjustments** - the following price adjustments (riders) may apply:
Municipal Assessment (Rider A-1)
Special Facilities Charge (Rider E)
Temporary Adjustment (Rider G)
Interim Adjustment (Rider J)

The Company's Terms and Conditions for Distribution Access Service and Distribution Service Connections apply to all retailers and Customers provided with System and/or Distribution Access Service by the Company. The Terms and Conditions are available at ATCO Electric offices during normal working hours or on the website www.atcoelectric.com.

**SMALL OILFIELD AND PUMPING POWER
 Isolated Industrial Areas - Distribution Connected (INTERIM)**

Price Schedule D44

Effective: January 1, 2003

- For Distribution Access Service, single or three-phase, for all Points of Service throughout the territory served by the Company from an isolated generation system, for production energy requirements in the petroleum and natural gas industries including related operations, such as rectifiers, cathodic protection and radio transmitters.

Price

- Charges for service in any one billing month shall be the sum of the Customer Charges, Demand Charges, and charge for deficient power factor, determined for each individual Point of Service:

	Customer Charge	Demand Charge
		For the all kW of billing demand
Distribution	-	\$9.96 / kW
Service	\$11.90 / month	-
TOTAL PRICE	\$11.90 / month	\$9.96 / kW

- Billing demand** shall be the higher of:
 - The highest metered demand during the billing period;
 - 85% of the highest metered demand during the 12-month period including and ending with the billing period;
 - the estimated demand;
 - the Distribution Contract Demand (DCD);
 - 4 kilowatts.

The Company's Terms and Conditions for Distribution Access Service and Distribution Service Connections apply to all retailers and Customers provided with System and/or Distribution Access Service by the Company. The Terms and Conditions are available at ATCO Electric offices during normal working hours or on the website www.atcoelectric.com.

SMALL OILFIELD AND PUMPING POWER Isolated Generation-Distribution Connected (INTERIM)

Price Schedule D44 (Continued)

Effective: January 1, 2003

Price (Continued)

- **Non-demand Metered Services** - For non-demand metered services, demand shall be estimated based on equipment nameplate ratings as follows:

$$\text{kW Billing Demand} = \text{kW Nameplate Rating}$$

or

$$\text{kW Billing Demand} = \text{HP Nameplate} \times 0.746$$

- The 85% ratchet applies only to demand metered loads. The cost of converting an energy meter to a demand meter will be in addition to the charges on this rate.
- **Estimated Demands** - Where it is impractical to meter a point of service, the Company may bill on the basis of estimated maximum demands. In such case, the monthly bill shall be the demand charge above applied to the estimated demand.
- The **Metered demand** will be the greater of the registered demand in kW, or 90% of the registered demand in kV.A where a kW reading is not available.
- **Charge for Deficient Power Factor** - where a Customer's power factor is found to be less than 90%, the Company may require such Customers to install corrective equipment. For Customer power factor which is less than 90%, an additional charge for deficient power factor of \$9/kV.A will be applied to the difference between the highest metered kV.A demand and 111% of the highest metered kW demand in the same billing period.

Application

1. **Demand Metered** - where services are demand metered, the meter will normally be read and reset at least once every two months.
2. **Price Options** - the following price options may apply:
Idle Service (Option F)
3. **Price Adjustments** - the following price adjustments (riders) may apply:
Municipal Assessment (Rider A-1)
Special Facilities Charge (Rider E)
Temporary Adjustment (Rider G)
Interim Adjustment (Rider J)

The Company's Terms and Conditions for Distribution Access Service and Distribution Service Connections apply to all retailers and Customers provided with System and/or Distribution Access Service by the Company. The Terms and Conditions are available at ATCO Electric offices during normal working hours or on the website www.atcoelectric.com.

REA FARM SERVICE (INTERIM)

Price Schedule D51

Effective: January 1, 2003

- For System Access Service and Distribution Access Service, for all Points of Service throughout the territory served by the Company, for farming operations which are connected to a Rural Electrification Association's distribution system.

Price

- Charges for service in any one billing month are the sum of the Customer, Demand and Energy charges as indicated below, determined for each individual Point of Service.
- Please refer to individual REA Tariffs, effective July 1, 2001, to determine applicable REA charges.

REA Farms in O & M Pool

	Customer Charge	Demand Charge	Energy Charge
Transmission	-	\$0.87 per kV.A	0.40 ¢ / kW.h
Distribution	-	\$2.27 per kV.A	-
Service	\$8.19 / service	-	-
REA Specific Charges	See REA Tariff	-	-
Total Price	\$C₁ / service	\$3.14 per kV.A	0.40 ¢ / kW.h

REA Farms Outside of O & M Pool

	Customer Charge	Demand Charge	Energy Charge
Transmission	-	\$0.87 per kV.A	0.40 ¢ / kW.h
Distribution	See REA Tariff	See REA Tariff	-
Service	See REA Tariff	-	-
REA Specific Charges	See REA Tariff	-	-
Total Price	\$C₁ / service	\$D₁ / kV.A	0.40 ¢ / kW.h

The Company's Terms and Conditions for Distribution Access Service and Distribution Service Connections apply to all retailers and Customers provided with System and/or Distribution Access Service by the Company. The Terms and Conditions are available at ATCO Electric offices during normal working hours or on the website www.atcoelectric.com.

REA FARM SERVICE (INTERIM)

Price Schedule D51 (Continued)

Effective: January 1, 2003

Price (Continued)

- kV.A capacity for billing purposes will be determined as follows:
 - a) For breakered services of 25 kV.A or less, the kV.A capacity will be set by the breaker size as shown below:

Breaker Amperes	25/41	35/50	50/75	75/110	100/150	200
Transformer Capacity in kV.A	3	5	7.5	10	15	25

- b) For non-breakered REA farm services of 25 kV.A or greater, the kV.A capacity for billing purposes is the greater of:
 - (i) the highest metered kV.A demand during the billing period;
 - (ii) the estimated demand;
 - (iii) 25 kV.A.
- **REA Specific Charges**
 - Other charges are applied on behalf of the REAs as defined in contracts and are subject to change from time to time.
 - These charges include operation and maintenance charges and deposit reserve charges, and are in addition to the charges contained in this price schedule.
- The minimum monthly charge is the sum of the Customer and demand charges plus any REA specific charges that may apply.

Application

- 1) **Demand Metering** - when the Company determines, by estimation or measurement, that a 25 kV.A breakered service may be overloaded, the company may require replacement of the breaker with a demand meter and modification of the service facilities in accordance with the Terms and Conditions.
- 2) **Price Option** - the following price option may apply:
 - Idle Service (Option F)
- 3) **Price Adjustments** - the following price adjustments (riders) may apply:
 - Temporary Adjustment (Rider G)
 - Interim Adjustment (Rider J)

The Company's Terms and Conditions for Distribution Access Service and Distribution Service Connections apply to all retailers and Customers provided with System and/or Distribution Access Service by the Company. The Terms and Conditions are available at ATCO Electric offices during normal working hours or on the website www.atcoelectric.com.

**REA FARM SERVICE –
 Excluding Wire Services Provider Functions (INTERIM)**

Price Schedule D52

Effective: January 1, 2003

- Applicable to any Rural Electrification Association, for whom the Company is not acting as the Wire Services Provider, as defined in the EUA.
- For all Points of Service throughout the territory served by the Company, for farming operations which are connected to the Rural Electrification Association’s distribution system.

Price

- Charges for service in any one billing month are the sum of the Customer, Demand and Energy charges as indicated below, determined for each individual Point of Service.

	Customer Charge	Demand Charge	Energy Charge
Transmission	-	\$0.87 per kV.A	0.40 ¢ / kW.h
Distribution	-	-	-
Service	\$4.41 / service	-	-
Total Price	\$4.41 / service	\$0.87 per kV.A	0.40 ¢ / kW.h

- kV.A capacity for billing purposes will be determined as follows:
 - a) For breakered services of 25 kV.A or less, the kV.A capacity will be set by the breaker size as shown below:

Breaker Amperes	25/41	35/50	50/75	75/110	100/150	200
Transformer Capacity in kV.A	3	5	7.5	10	15	25

- b) For non-breakered REA farm services of 25 kV.A or greater, the kV.A capacity for billing purposes is the greater of:
 - (i) the highest metered kV.A demand during the billing period;
 - (ii) the estimated demand;
 - (iii) 25 kV.A.
- The minimum monthly charge is the sum of the Customer and demand charge.

The Company's Terms and Conditions for Distribution Access Service and Distribution Service Connections apply to all retailers and Customers provided with System and/or Distribution Access Service by the Company. The Terms and Conditions are available at ATCO Electric offices during normal working hours or on the website www.atcoelectric.com.

REA FARM SERVICE – Excluding Wire Services Provider Functions
--

Price Schedule D52 (Continued)

Effective: January 1, 2003

Application

- 1) **Demand Metering** - when the Company determines, by estimation or measurement, that a 25 kV.A breakered service may be overloaded, the company may require replacement of the breaker with a demand meter and modification of the service facilities in accordance with the Terms and Conditions.

- 2) **Price Option** - the following price option may apply:
Idle Service (Option F)

- 3) **Price Adjustments** - the following price adjustments (riders) may apply:
Temporary Adjustment (Rider G)
Interim Adjustment (Rider J)

The Company's Terms and Conditions for Distribution Access Service and Distribution Service Connections apply to all retailers and Customers provided with System and/or Distribution Access Service by the Company. The Terms and Conditions are available at ATCO Electric offices during normal working hours or on the website www.atcoelectric.com.

FARM SERVICE (INTERIM)

Price Schedule D56

Effective: January 1, 2003

- For System Access Service and Distribution Access Service, for all Points of Service throughout the territory served by the Company, for farming operations which are connected to the Company's distribution system.

Price

- Charges for service in any one billing month are the sum of the Customer, Demand, and Energy Charges as indicated below, determined for each individual Point of Service.

	Customer Charge	Demand Charge	Energy Charge
Transmission		\$0.87 / kV.A	0.40 ¢ / kW.h
Distribution	\$4.42 / service	\$3.42 / kV.A	0.32 ¢ / kW.h
Service	\$8.19 / service		
Total Price	\$12.61 / service	\$4.29 / kV.A	0.72 ¢ / kW.h

- kV.A capacity for billing purposes will be determined as follows:
 - a) For breakered services of 25 kV.A or less, the kV.A capacity will be set by the breaker size as shown below:

Breaker Amperes	25/41	35/50	50/75	75/110	100/150	200
Transformer Capacity in kV.A	3	5	7.5	10	15	25

- b) For non-breakered farm services of 25 kV.A or greater, the kV.A capacity for billing purposes is the greater of:
 - (i) the highest metered kV.A demand during the billing period;
 - (ii) the estimated demand;
 - (iii) the contract demand;
 - (iv) 25 kV.A.

- The minimum monthly charge is the sum of the Customer and Demand Charges.

The Company's Terms and Conditions for Distribution Access Service and Distribution Service Connections apply to all retailers and customers provided with System and/or Distribution Access Service by the Company. The Terms and Conditions are available at ATCO Electric offices during normal working hours or on the website www.atcoelectric.com.

FARM SERVICE (INTERIM)

Price Schedule D56 (Continued)

Effective: January 1, 2003

Application

- 1) **Demand Metering** - when the Company determines, by estimation or measurement, that a 25 kV.A breakered service may be overloaded, the company may require replacement of the breaker with a demand meter and modification of the service facilities in accordance with the Terms and Conditions for Distribution Service Connections.
- 2) **Price Options** - the following price option may apply:
Idle Service (Option F)
- 3) **Price Adjustments** - the following price adjustments (riders) may apply:
Temporary Adjustment (Rider G)
Interim Adjustment (Rider J)

The Company's Terms and Conditions for Distribution Access Service and Distribution Service Connections apply to all retailers and customers provided with System and/or Distribution Access Service by the Company. The Terms and Conditions are available at ATCO Electric offices during normal working hours or on the website www.atcoelectric.com.

STREET LIGHTING SERVICE (INTERIM)

Price Schedule D61

Effective: January 1, 2003

- For System Access Service and Distribution Access Service for all Points of Service throughout the territory served by the Company, for street lighting.
- Not available for private lighting.

Price

- Charges for service in any one billing month are the sum of the Customer Charge and Demand Charge, determined for each individual Point of Service.

Decorative Lighting (61 A)

- For decorative lighting fixtures installed, owned and maintained by the Company.
- The customer is responsible for the full cost of installation.
- Includes maintenance only.
- Specific contracts may require customers to purchase and maintain inventory of decorative lamps if the customer's lighting fixtures are not the same as the standard used by the company.

	Decorative Lamps	
	Customer Charge	Demand Charge
Transmission	-	0.31¢ /watt
Distribution	\$5.49	0.28¢ /watt
Service	\$0.32	0.0¢ /watt
Total Price	\$5.81 per fixture	0.59¢ /watt of billing demand

The Company's Terms and Conditions for Distribution Access Service and Distribution Service Connections apply to all retailers and customers provided with System and/or Distribution Access Service by the Company. The Terms and Conditions are available at ATCO Electric offices during normal working hours or on the website www.atcoelectric.com.

STREET LIGHTING SERVICE
(INTERIM) (Continued)**Price Schedule D61 (Continued)****Effective: January 1, 2003****Price (Continued)****Investment Option (61 B)**

- For standard lighting fixtures installed, owned, and maintained by the Company.

	All Lamps	
	Customer Charge	Demand Charge
Transmission	-	0.31¢ /watt
Distribution	\$11.62	0.28¢ /watt
Service	\$0.32	0.0¢ /watt
Total Price	\$11.94 per fixture	0.59¢ /watt of billing demand

The Company's Terms and Conditions for Distribution Access Service and Distribution Service Connections apply to all retailers and customers provided with System and/or Distribution Access Service by the Company. The Terms and Conditions are available at ATCO Electric offices during normal working hours or on the website www.atcoelectric.com.

STREET LIGHTING SERVICE
(INTERIM) (Continued)**Price Schedule D61 (Continued)****Effective: January 1, 2003****Price (Continued)****Distribution Investment Option (61 C)**

- For customer owned and installed lighting.
- For installation and maintenance of distribution facilities up to, but not including the customer owned conductor serving the light fixtures.
- The Company may require that the Point of Service be metered and served on Price Schedule 21, if the load requirements change over time, or if loads that are not lighting loads are served from the same Point of Service.

	All Lamps	
	Customer Charge	Demand Charge
Transmission	-	0.31¢ /watt
Distribution	\$7.27	0.28¢ /watt
Service	\$0.32	0.0¢ /watt
Total Price	\$7.59 per fixture	0.59¢ /watt of billing demand

The Company's Terms and Conditions for Distribution Access Service and Distribution Service Connections apply to all retailers and customers provided with System and/or Distribution Access Service by the Company. The Terms and Conditions are available at ATCO Electric offices during normal working hours or on the website www.atcoelectric.com.

STREET LIGHTING SERVICE
(INTERIM) (Continued)**Price Schedule D61 (Continued)****Effective: January 1, 2003****Price (Continued)****No Investment Option (61 D)**

- The customer is responsible for the full cost of installation.
- The customer is responsible for the full cost of replacement.
- Includes maintenance only.
- This portion of the rate is closed to new Points of Service and will be phased out over a 5 year period, according to the charges in the tables below which will change in each calendar year.
- All customers served under Option 61D may at any time between January 1, 2001 and December 31, 2005, elect to have service billed under Option 61E or Option 61B.

YEAR:	All Lamps	
2001	Customer Charge	Demand Charge
Transmission	-	0.42¢ /watt
Distribution	\$4.75	0.26¢ /watt
Service	\$0.30	0.0¢ /watt
Total Price	\$5.05 per fixture	0.68¢ /watt of billing demand

The Company's Terms and Conditions for Distribution Access Service and Distribution Service Connections apply to all retailers and customers provided with System and/or Distribution Access Service by the Company. The Terms and Conditions are available at ATCO Electric offices during normal working hours or on the website www.atcoelectric.com.

STREET LIGHTING SERVICE
 (INTERIM) *(Continued)*

Price Schedule D61 (Continued)

Effective: January 1, 2003

Price (Continued)

YEAR:	All Lamps	
2002	Customer Charge	Demand Charge
Transmission	-	0.31¢ /watt
Distribution	\$6.66	0.28¢ /watt
Service	\$0.32	0.0¢ /watt
Total Price	\$6.98 per fixture	0.59¢ /watt of billing demand

YEAR:	All Lamps	
2003	Customer Charge	Demand Charge
Transmission	-	0.31¢ /watt
Distribution	\$8.31	0.28¢ /watt
Service	\$0.32	0.0¢ /watt
Total Price	\$8.63 per fixture	0.59¢ /watt of billing demand

YEAR:	All Lamps	
2004	Customer Charge	Demand Charge
Transmission	-	0.31¢ /watt
Distribution	\$9.96	0.28¢ /watt
Service	\$0.32	0.0¢ /watt
Total Price	\$10.28 per fixture	0.59¢ /watt of billing demand

The Company's Terms and Conditions for Distribution Access Service and Distribution Service Connections apply to all retailers and customers provided with System and/or Distribution Access Service by the Company. The Terms and Conditions are available at ATCO Electric offices during normal working hours or on the website www.atcoelectric.com.

STREET LIGHTING SERVICE
(INTERIM) *(Continued)***Price Schedule D61 (Continued)****Effective: January 1, 2003****Price (Continued)**

YEAR:	All Lamps	
2005	Customer Charge	Demand Charge
Transmission	-	0.31¢ /watt
Distribution	\$11.62	0.28¢ /watt
Service	\$0.32	0.0¢ /watt
Total Price	\$11.94 per fixture	0.59¢ /watt of billing demand

The Company's Terms and Conditions for Distribution Access Service and Distribution Service Connections apply to all retailers and customers provided with System and/or Distribution Access Service by the Company. The Terms and Conditions are available at ATCO Electric offices during normal working hours or on the website www.atcoelectric.com.

STREET LIGHTING SERVICE
(INTERIM) (Continued)**Price Schedule D61 (Continued)****Effective: January 1, 2003****Price (Continued)****No Investment Option (61 E)**

- Available for new installations only.
- For lighting fixtures installed, owned and maintained by the Company.
- The customer is responsible for the full cost of installation.
- The customer is responsible for the full cost of replacement.
- Includes maintenance only.

	All Lamps	
	Customer Charge	Demand Charge
Transmission	-	0.31¢ /watt
Distribution	\$5.00	0.28¢ /watt
Service	\$0.32	0.0¢ /watt
Total Price	\$5.32 per fixture	0.59¢ /watt of billing demand

Application

- 1) **Price Option** - the following price option may apply:
Idle Service (Option F)
- 2) **Price Adjustments** – the following price adjustments (riders) may apply:
Municipal Assessment (Rider A-1)
Temporary Adjustment (Rider G)
Interim Adjustment (Rider J)

The Company's Terms and Conditions for Distribution Access Service and Distribution Service Connections apply to all retailers and customers provided with System and/or Distribution Access Service by the Company. The Terms and Conditions are available at ATCO Electric offices during normal working hours or on the website www.atcoelectric.com.

**PRIVATE LIGHTING SERVICE
 (INTERIM)**

Price Schedule D63

Effective: January 1, 2003

- For System Access Service and Distribution Access Service for all Points of Service throughout the territory served by the Company, for sentinel lighting.

Price

- Charges for service in any one billing month are the sum of the Customer Charge and Demand Charge determined for each individual Point of Service.

Investment Option (63 A)

- For standard sentinel lighting fixtures installed, owned, and maintained by the Company

	Customer Charge	Demand Charge
Transmission	-	0.31 ¢ /watt
Distribution	\$3.25	0.59 ¢ /watt
Service	\$5.00	-
Total Price	\$8.25 per fixture	0.90 ¢ /watt of billing demand

Summer Village Option (63 B)

- For standard sentinel lighting fixtures installed, owned and maintained by the Company
- For seasonal use only (six month minimum period) by Municipal Corporations in summer villages.
- This portion of the rate is closed.

	Customer Charge	Demand Charge
Transmission	-	0.31¢ /watt
Distribution	\$5.17	0.59¢ /watt
Service	\$5.00	-
Total Price	\$10.17 per fixture	0.90¢ /watt of billing demand

The Company's Terms and Conditions for Distribution Access Service and Distribution Service Connections apply to all retailers and customers provided with System and/or Distribution Access Service by the Company. The Terms and Conditions are available at ATCO Electric offices during normal working hours or on the website www.atcoelectric.com.

**PRIVATE LIGHTING SERVICE
(INTERIM)****Price Schedule D63 (Continued)****Effective: January 1, 2003****Price (Continued)****No Investment Option (63 C)**

- Available for new installations only.
- For standard lighting fixtures installed, owned, and maintained by the Company.
- The customer is responsible for the full cost of installation.
- The customer is responsible for the full cost of replacement.
- Includes maintenance only.

	Customer Charge	Demand Charge
Transmission	-	0.31¢ /watt
Distribution	\$1.72	0.17 /watt
Service	\$5.00	-
Total Price	\$6.72 per fixture	0.48¢ /watt of billing demand

Metering Option (63 D)

- For standard lighting fixtures installed, owned, and maintained by the Company.
- For service through the meter at the Point of Service.
- This portion of the rate is closed.

	Customer Charge	Demand Charge
Transmission	-	0.31¢ /watt
Distribution	\$3.41	0.59¢ /watt
Service	\$5.00	-
Total Price	\$8.41 per fixture	0.90¢ /watt of billing demand

The Company's Terms and Conditions for Distribution Access Service and Distribution Service Connections apply to all retailers and customers provided with System and/or Distribution Access Service by the Company. The Terms and Conditions are available at ATCO Electric offices during normal working hours or on the website www.atcoelectric.com.

**PRIVATE LIGHTING SERVICE
(INTERIM)****Price Schedule D63 (Continued)****Effective: January 1, 2003****Price (Continued)****Distribution Investment Option (63 E)**

- For customer owned and installed lighting.
- For installation and maintenance of distribution facilities up to, but not including the customer owned conductor serving the light fixtures.
- The Company may require that the Point of Service be metered and served on Price Schedule 21, if the load requirements change over time, or if loads that are not lighting loads are served from the same Point of Service.

	Customer Charge	Demand Charge
Transmission	-	0.31¢ /watt
Distribution	\$2.23	0.59¢ /watt
Service	\$5.00	-
Total Price	\$7.23 per fixture	0.90¢ /watt of billing demand

Application

Price Adjustments - the following price adjustments (riders) may apply:

- Municipal Assessment (Rider A-1)
- Temporary Adjustment (Rider G)
- Interim Adjustment (Rider J)

The Company's Terms and Conditions for Distribution Access Service and Distribution Service Connections apply to all retailers and customers provided with System and/or Distribution Access Service by the Company. The Terms and Conditions are available at ATCO Electric offices during normal working hours or on the website www.atcoelectric.com.

IDLE SERVICE

Option F

Effective: January 1, 2002

- The Idle Service charge will be determined for each point of service throughout the territory served by the Company, that will be disconnected for more than 12 months and may require service to be restored at a future date.
- The Idle Service charge will be charged to the retailer. If the point of service is not enrolled with a retailer, the Idle Service charge will be charged directly to the customer.

Price Adjustment

The Idle Service charges shall be:

Residential (Price Schedule D11) - the price schedule minimum monthly Distribution Charge.

Farm (Price Schedules D51 or D56) - the sum of the Distribution Customer charge and the Distribution and Transmission Demand Charges applicable to a 3 kV.A service, and will be billed on the regular billing cycle for that Point of Service (i.e. either monthly or quarterly).

General Service and Oilfield (Price Schedules D21, D22, D31, D32, or D41) – the sum of:

- a) the Transmission Charge according to the applicable price schedule, and
- b) the Distribution Demand Charge according to the applicable price schedule.

General Service (Price Schedule T31) – all charges according to Price Schedule T31 apply.

Streetlights (Price Schedule D61) - the sum of the Distribution Charge and Transmission Charge.

Application

1. For services that are reconnected within 12 months of disconnection refer to Terms and Conditions 14.4 – Restoration of Service Connection.
2. For further information on idle services, refer to Terms and Conditions 14.1 – Disconnection and Idle Service.

The retailer will be responsible for any costs that the Company incurs from the Transmission Administrator as a result of a point of service going idle. If the point of service is not enrolled with a retailer, the costs incurred from the Transmission Administrator will be charged directly to the customer.

The Company's Terms and Conditions for Distribution Access Service and Distribution Service connections apply to all retailers and customers provided with System and/or Distribution Access Service by the Company. The Terms and conditions are available at ATCO Electric offices during normal working hours or on the website www.atcoelectric.com.

SERVICE FOR NON-STANDARD TRANSFORMATION AND METERING CONFIGURATIONS

Option H

Effective: January 1, 2002

- For Points of Service throughout the territory served by the Company under Price Schedule D21, D22, D31, T31, D32 where metering and / or delivery voltage are non-standard.
- Standard service for distribution connected customers is delivered and metered at the utilization voltage. When delivery or metering is necessary at other voltages, for the convenience of either the customer or the Company, bills for service will be adjusted as outlined below in (a) to (c).
- Standard service for transmission connected customers is delivered to the customer and metered at the substation voltage. When delivery is required at lower voltages, bills for service will be adjusted as outlined below in (d). Section (b) may also apply to transmission connected customers.

Price Adjustment

- (a) If the point of delivery and metering is on the primary side (25 kV) of a transformer (including cases where one-point service is required by the customer for more than a single utilization voltage or point of use), and the customer owns or rents the necessary transformer(s), a **discount of \$0.42 per kW** of billing demand will be applied. This adjustment does not apply to customers connected directly to the transmission system who are exempt from the Distribution Charge on the applicable rate.
- (b) If primary or higher voltage delivery metering is desirable for the convenience of the Company, or to improve accessibility, etc., **demand and energy measurements will be reduced by 1%** so as to approximate secondary voltage delivery conditions.
- (c) If primary or higher voltage delivery is made to customer owned transformers, but metering is at secondary or utilization voltage for the Company's convenience, **demand and energy measurements will be increased by 1%** so as to approximate primary or transmission voltage delivery conditions and a **discount, as specified in (a)** shall apply.
- (d) Customers who are connected directly to the transmission system, but take service from the low side of a transformer (with primary side 25kV), and do not own or rent any necessary transformer(s), and are exempt from the Distribution Charge on the applicable rate, a **surcharge of \$0.42 per kW** of billing demand will apply.

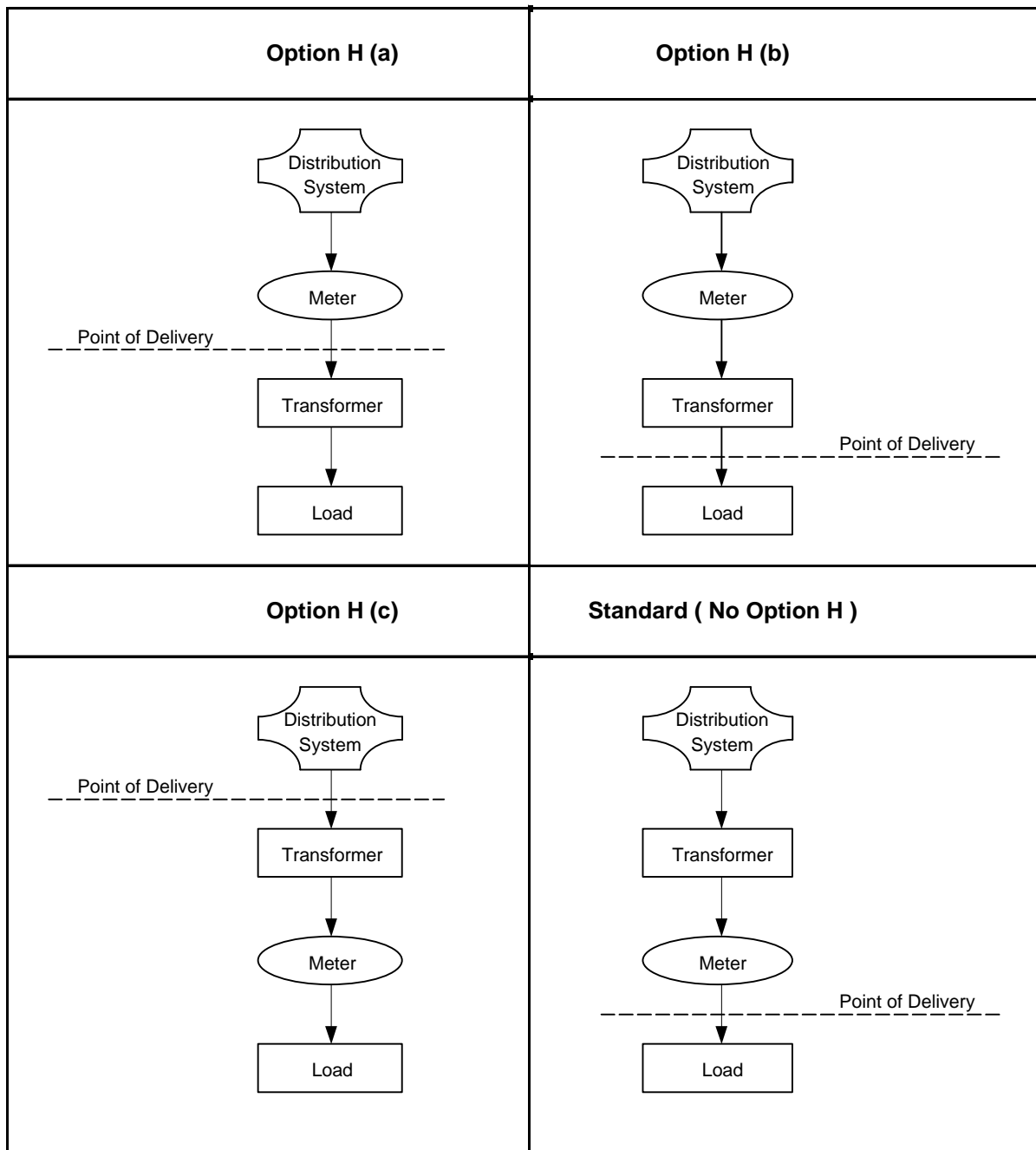
The Company's Terms and Conditions for Distribution Access Service and Distribution Service connections apply to all retailers and customers provided with System and/or Distribution Access Service by the Company. The Terms and conditions are available at ATCO Electric offices during normal working hours or on the website www.atcoelectric.com.

SERVICE FOR NON-STANDARD TRANSFORMATION AND METERING CONFIGURATIONS

Option H (Continued)

Effective: January 1, 2002

**Schematic of Metering and Transformation Configurations for Option H Definitions
 (Distribution Connected Customers)**



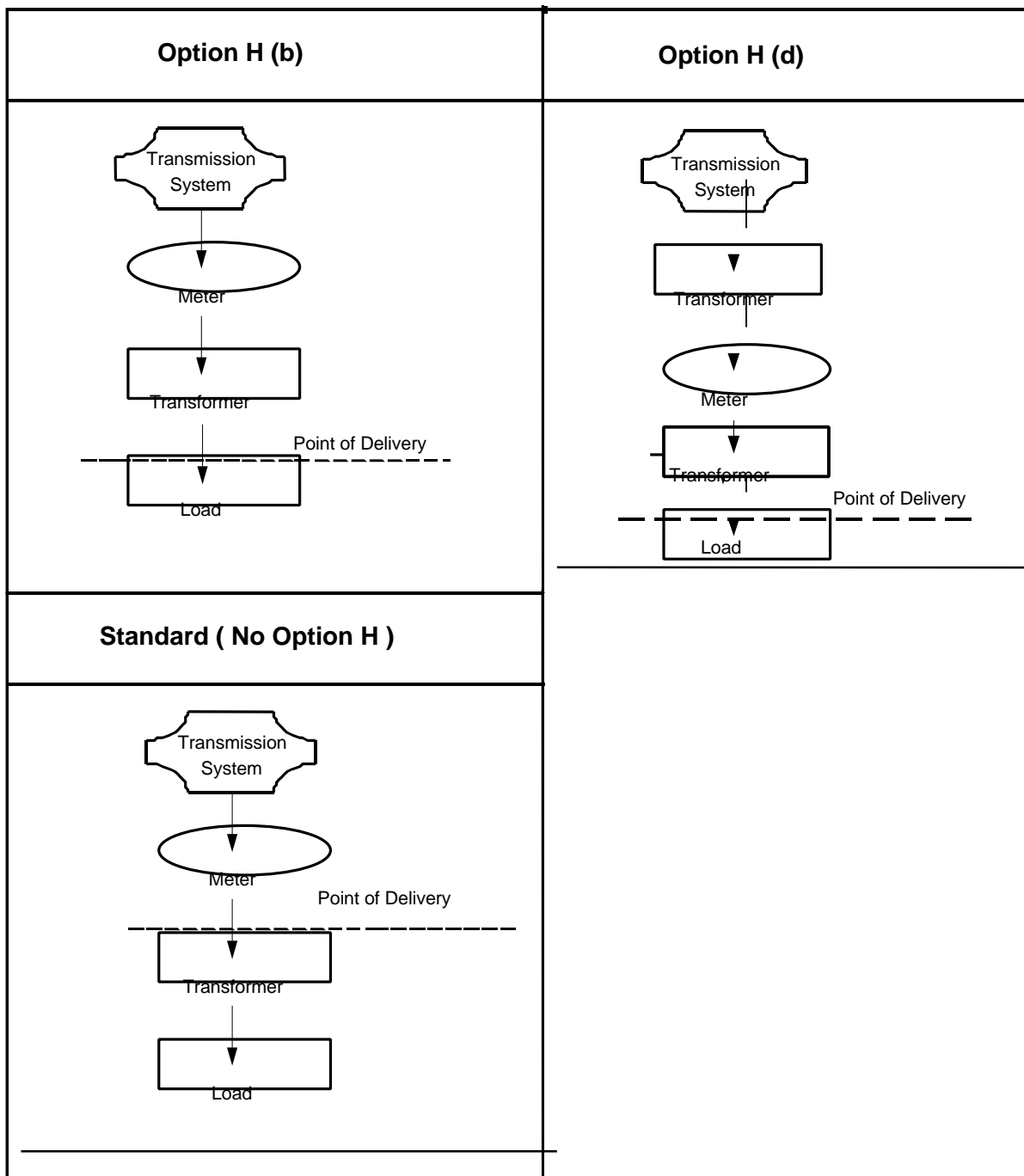
The Company's Terms and Conditions for Distribution Access Service and Distribution Service connections apply to all retailers and customers provided with System and/or Distribution Access Service by the Company. The Terms and conditions are available at ATCO Electric offices during normal working hours or on the website www.atcoelectric.com.

SERVICE FOR NON-STANDARD TRANSFORMATION AND METERING CONFIGURATIONS

Option H (Continued)

Effective: January 1, 2002

**Schematic of Metering and Transformation Configurations for Option H Definitions
 (Transmission Connected Customers)**



The Company's Terms and Conditions for Distribution Access Service and Distribution Service connections apply to all retailers and customers provided with System and/or Distribution Access Service by the Company. The Terms and conditions are available at ATCO Electric offices during normal working hours or on the website www.atcoelectric.com.

REA DISTRIBUTION PRICE CREDIT

Option P

Effective: January 1, 2002

- For all Pooled O&M REA Farm Points of Service throughout the territory served by the Company, served under Price Schedule D21 or Price Schedule D31.

Price Adjustment

Standard Small General Service Price Schedule 21

For REA farm Points of Service electing to take service under Small General Service Price Schedule 21, a credit adjustment of 52% will be applied to the base bill.

Large General Service / Industrial Price Schedule D31

For REA farm Points of Service electing to take service under Large General Service / Industrial Price Schedule D31, a credit adjustment of 27% will be applied to the base bill.

MUNICIPAL ASSESSMENT

Rider A-1

Effective: February 1, 2004

- Applicable throughout the territory served by the Company to electric service within the municipalities identified in Table 2.
- The following are exempt from the surcharge:
 - (a) Farm customers (Price Schedules 51 and 56)
 - (b) Irrigation Pumping customers (Price Schedule 25 and 26)
 - (c) Customers within Indian Reservations not listed in Table 2
 - (d) Special Facilities Charge (Rider E) customers

Price Adjustment

- The Company pays to a municipality each year or month, in accordance with the franchise agreement between the Company and the municipality, a percent of the gross revenue, or wires revenue, of the Company derived from the sale or delivery of electricity to the consumers in the municipality.
- The percentage of gross revenue (franchise fee and/or tax), or wires revenue, to be paid by the Company to its franchised municipalities is given by category number in Table 1. The municipalities, and their category numbers, are listed in Table 2. For Category 7 the municipalities and percentages of yearly wires revenue are listed in Table 3. For Category 8 the municipalities and percentages of monthly wires revenue are listed in Table 4.
- For all categories except Category 8, an estimated surcharge will be added to each customer's bill within a municipality in order to recover the above payments. Adjustments will be made once each year for any difference between the estimated surcharge collected and the actual surcharge required.
- For Category 8, the percentages listed in Table 4 will be applied to the monthly billing. The amount billed will be paid to the municipality in accordance with the franchise agreement between the Company and the municipality.

MUNICIPAL ASSESSMENT (Continued)

Rider A-1 (Continued)

Effective: February 1, 2004

Price Adjustment (Continued)

Table 1 – Percent of Gross Revenue by Category

CATEGORY 1	2% of the first \$100,000 of gross revenue; 3% of the next \$200,000 of gross revenue; 4% of the next \$200,000 of gross revenue; 5% of gross revenue in excess of \$500,000.
CATEGORY 1A	2% of the gross revenue
CATEGORY 2.	3% of the gross revenue
CATEGORY 2A	3.5% of the gross revenue
CATEGORY 2B	4% of the gross revenue
CATEGORY 2C	4.25% of the gross revenue
CATEGORY 3	5% of the gross revenue
CATEGORY 3A	6% of the gross revenue.
CATEGORY 3B	7% of the gross revenue
CATEGORY 4	8% of the gross revenue
CATEGORY 5	1.0% of the first \$100,000 of gross revenue; 1.5% of the next \$200,000 of gross revenue; 2.0% of the next \$200,000 of gross revenue; 2.0% of gross revenue in excess of \$500,000.
CATEGORY 6	An amount equal to taxes assessed pursuant to the Municipal Government Act Chap. M-26. 1.
CATEGORY 7	A percentage of the wires revenue of a municipality as listed in Table 3.
CATEGORY 8	A percentage of monthly wires revenue of a municipality as listed in Table 4.

MUNICIPAL ASSESSMENT (Continued)

Rider A-1 (Continued)

Effective: February 1, 2004

Price Adjustment (Continued)

Table 2 – Category Numbers of Municipalities

Alliance 8, 6	Empress 7,6	Jasper Nat'l Park 5	Sexsmith 7
Andrew 7	Fairview 8, 6	Kinuso 8, 6	Slave Lake 7
Beaverlodge 7	Falher 7	Kitscoty 7, 6	Smoky Lake 7, 6
Berwyn 7	Forestburg 7	Linden 8, 6	Spirit River 8, 6
Big Valley 7	Fort McMurray 7	Lloydminster 7, 6	St Paul 8, 6
Bonnyville 8, 6	Fox Creek 8, 6	Manning 7	Stettler 7,6
Botha 7	Gadsby 6	Mannville 8, 6	Swan Hills 7
Carbon 7	Galahad 7	Marwayne 7, 6	Three Hills 8, 6
Castor 7	Girouxville 7	McLennan 7	Trochu 8, 6
Cereal 7	Glendon 8, 6	Minburn 6	Two Hills 8, 6
Cold Lake 8, 6	Grande Cache 8, 6	Morrin 7	Valleyview 7
Consort 7	Grande Prairie 7, 6	Mundare 6	Vegreville 6
Coronation 7	Grimshaw 7	Munson 7,6	Vermilion 8, 6
Delburne 7	Halkirk 8, 6	Myrnam 6	Veteran 7, 6
Delia 8, 6	Hanna 8, 6	Nampa 7	Vilna 8, 6
Derwent 6	Heisler 8, 6	Oyen 7	Waskatenau 6
Dewberry 8, 6	High Level 8, 6	Paradise Valley 7	Wembley 7
Donalda 8, 6	High Prairie 7	Peace River 7	Willingdon 6
Donnelly 7	Hines Creek 7	Radway (County 7) 7	Youngstown 7, 6
Drumheller 8,6	Hythe 7	Rainbow Lake 8, 6	
Elk Point 8, 6	Innisfree 7	Rosalind 7	
Elnora 8, 6	ID Jasper 7	Rycroft 7	

Table 2 – Category Numbers of Municipalities

Category 6 also applies to the following non-franchised municipalities:

Bonnyville Beach	County No. 27 Minburn	M.D. of Big Lake No. 125
Horseshoe Bay	County No. 29 Flagstaff	M.D. of Smoky R. No. 130
Lavoy	County No. 30 Lamont	M.D. of East Peace No. 131
Pelican Narrows	County No. 89 Lakeland	M.D. of Spirit River No. 133
Rochon Sands	M.D. of Badlands No. 07	M.D. of Peace No. 135
Wanham	M.D. of Greenview No. 16	M.D. of Fairview No. 136
Warspite	M.D. of Opportunity No. 17	I.D. No. 12 & ID No. 24
Whitesands	M.D. of Wood Buffalo No. 18	Allison Bay B219
County No. 01 Grande Pr.	M.D. of Birch Hills No. 19	Fort McMurray Band B352
County No. 06 Stettler	M.D. of Saddle Hills No. 20	Peavine N172
County No. 07 Thornhild	M.D. of Clear Hills No. 21	Gift Lake N173
County No. 13 Smoky Lake	M.D. of Northern Lights No. 22	East Prairie N174
County No. 16 Wheatland	M.D. of MacKenzie No. 23	Elizabeth N187
County No. 18 Paintearth	M.D. of Acadia No. 34	Fishing Lake N188
County No. 19 St. Paul	M.D. of Starland No. 47	Paddle Prairie N221
County No. 21 Two Hills	M.D. of Kneehill No. 48	Special Areas
County No. 22 Camrose	M.D. of Bonnyville No. 87	Sturgeon Lake I.R. #154
County No. 23 Red Deer	M.D. of Bonnyville Annexed No. 88	Whitefish Lake Band B924
County No. 24 Vermilion R.	M.D. of Lesser Slave River No. 124	

Table 3 – Percent of Wires Revenue by Municipality (Category 7)

Andrew	4.50%	Grimshaw	7.50%	Sexsmith	8.20%
Beaverlodge	7.20%	High Prairie	7.80%	Slave Lake	8.70%
Berwyn	5.25%	Hines Creek	6.50%	Smoky Lake	5.50%
Big Valley	3.75%	Hythe	7.25%	Stettler	7.50%
Botha	4.50%	Innisfree	5.25%	Valleyview	7.60%
Carbon	3.50%	Jasper (ID)	7.50%	Veteran	4.00%
Castor	5.00%	Kitscoty	5.00%	Wembley	6.70%
Cereal	5.00%	Lloydminster	13.00%	Youngstown	4.00%
Consort	5.25%	Manning	7.50%		
Coronation	5.75%	Marwayne	4.00%		
Delburne	3.75%	McLennan	8.25%		
Donnelly	5.00%	Morrin	6.00%		
Empress	5.25%	Munson	3.00%		
Falher	7.50%	Nampa	5.00%		
Forestburg	4.00%	Oyen	7.75		
Fort McMurray	7.60%	Paradise Valley	3.50%		
Galahad	6.75%	Peace River	7.25%		
Girouxville	7.00%	Radway (County 7)	3.00%		
Grande Prairie	10.10%	Rycroft	4.30%		

Table 4 – Percent of Monthly Wires Revenue by Municipality (Category 8)
 Paid in addition to other taxes

Alliance	4.00%	Fox Creek*	4.50%	Rainbow Lake	4.75%
Bonnyville	6.80%	Glendon	1.50%	Rosalind	0.50%
Cold Lake	4.25%	Grande Cache	4.60%	Smoky Lake	3.25%
Cornation	3.75%	Halkirk	1.00%	Spirit River	4.50%
Delia	0.50%	Hanna	3.50%	St Paul	7.00%
Dewberry	0.00%	Heisler	0.00%	Swan Hills	4.00%
Donalda	1.50%	High Level	6.50%	Three Hills	5.00%
Drumheller	9.00%	Kinuso	3.50%	Trochu	3.50%
Elk Point	3.60%	Linden	4.00%	Two Hills*	2.75%
Elnora*	1.00%	Mannville	2.50%	Vermilion	3.50%
Fairview	6.00%	MD Badlands	9.00%	Vilna	4.00%

SPECIAL FACILITIES CHARGE

Rider E

Effective: January 1, 2002

- Applicable to facilities constructed by the Company on customer owned or leased property, as requested by the customer.

Price

- The Facilities charge will be set out in a contract, negotiated between the customer and the Company, and will recover the revenue requirement of the applicable facilities. The revenue requirement will be calculated on a rate base of net book value and will include Return, Income Tax, Depreciation, and Operations and Maintenance costs.

Application

- Facility charges will normally be billed monthly. Monthly charges are subject to change as new facilities are added or currently installed facilities are retired.
- For facilities shared among more than one customer, a separate contract will be established for each customer making use of the facilities.
- Facilities constructed under Rider E are owned and maintained by the company.

TEMPORARY ADJUSTMENT**Rider G***Effective: January 1, 2003*

- Applicable to all customers, at points of service, throughout the territory served by the Company for energy consumption from January 1, 2003, to June 30, 2003.
- The Company's applicable charges under the following Price Schedules will be adjusted by the amounts noted below:

Price Schedule D11	-0.298¢/kW.h
Price Schedule D21	-0.287¢/kW.h
Price Schedule D22	-0.287¢/kW.h
Price Schedule D25	-0.793¢/kW.h
Price Schedule D26	-0.793¢/kW.h
Price Schedule D31	-0.290¢/kW.h
Price Schedule T31	-0.087¢/kW.h
Price Schedule D32	-0.155¢/kW.h
Price Schedule D33	-0.000¢/kW.h
Price Schedule T33	-0.065¢/kW.h
Price Schedule D41	-0.043¢/kW.h
Price Schedule D51	-0.322¢/kW.h
Price Schedule D52	-0.322¢/kW.h
Price Schedule D56	-0.293¢/kW.h
Price Schedule D61	-0.294¢/kW.h
Price Schedule D63	-0.333¢/kW.h

Note: Rider G does not apply to Rider A-1, Rider E, and Rider J.

INTERIM ADJUSTMENT

Rider J

Effective: January 1, 2002

- Applies to all electric service throughout the territory served by the Company when a charge or refund is approved by the AEUB.